

Local Authority Performance on Emissions Reductions

Sian Ferguson
January 2010



This session....

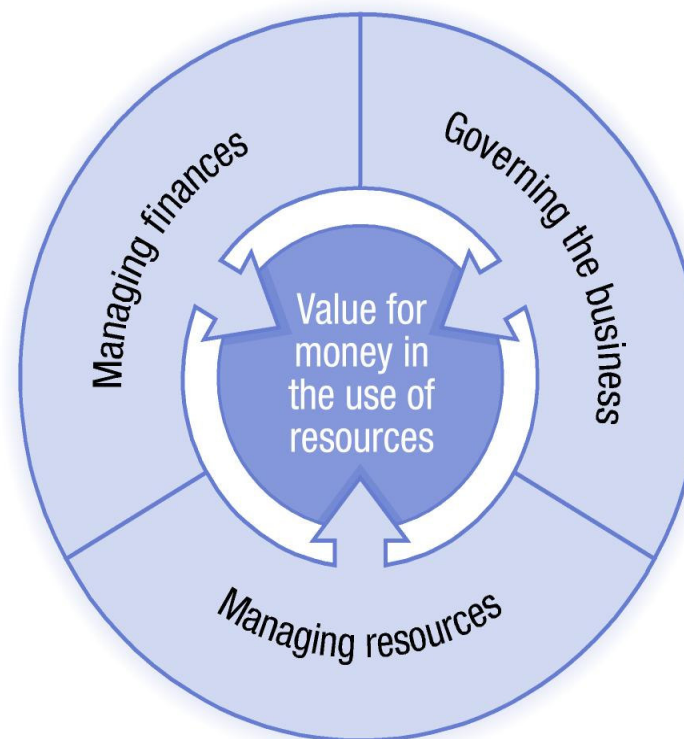
- Provide an overview of the Audit Commission's approach to regulating local authority performance on emissions reductions
- Findings from last year
- What we are looking for this year?

Why is the Commission interested in how much carbon you make?

- Government policy
- Regulating your progress delivering your responsibilities and priorities
- Better value for money

Use of Resources assessment framework

- Three themes resulting in an overall judgement on value for money in the use of resources.
- Scored on 1 – 4 scale.
- *New for 2009* - the use of natural resources and more focus on achievements, outputs and outcomes
- First assessments reported as part of Comprehensive Area Assessment 2009



Part of Comprehensive Area Assessment

- Use of Resources (UoR) judgements and scores feed into the Organisational Assessment and score
- Judgements on individual local authority performance on resource management evidence of leadership which feeds into the Area Assessment
- Partnership working on resource management important evidence for both Organisational and Area Assessments
- NI 185 – not reported yet, will inform Organisational and Area Assessments

What's included in the Use of Resources assessment?

- What's in? (the things you pay for);

For example energy and water used in schools, offices, leisure centres, libraries, parks, children's centres

Changes in your own behaviours (e.g. staff business travel, waste you produces on your premises premises)

- What's out?

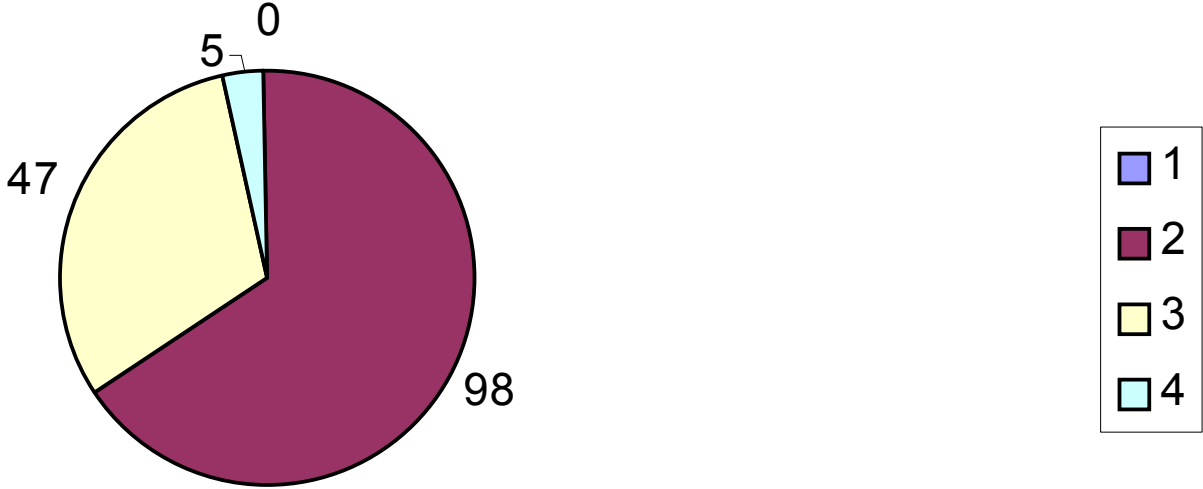
Travel by your residents and school children

Domestic waste

Better insulated homes

What we found last year (in unitary and upper tier councils)

KLOE 3.1 Scores for 2009



What we found in the Yorkshire and Humber Region

➤ In 2008/09

- 10 scored 2
- 4 out of 15 scored 3
- 1 scored 4 – Kirklees

➤ In 2009/10

- Expect more 1s

This year - What do we want to know?

- *Have you got the basics right?*
 - Do you know how much energy you use?
 - Do you know how you can most effectively reduce energy use?
 - Are you developing a strategy to manage resources?
- *Performing well?*
 - All of the above and a strategy that is making a difference – has targets, prioritises biggest energy users, is resourced, is delivering significant savings

This year - What do we want to know?

- How are you working in partnership across the county to reduce your individual carbon footprint and get better value for money?

Where to find more information

Use of resources web pages

<http://www.audit-commission.gov.uk/useofresources/index.asp>

Use of resources auditor guidance

<http://www.audit-commission.gov.uk/useofresources/2009guidance.asp>

CAA web pages

<http://www.audit-commission.gov.uk/caa/index.asp>