

NORTH YORKSHIRE CHILDREN'S TRUST

16th NOVEMBER 2009

LOCAL AREA AGREEMENT QUARTERLY MONITORING REPORT

1.0 Purpose of the Report

- 1.1 To provide the Children's Trust Board with an overview of performance at Quarter 2 (July-September) 2009 for the Local Area Agreement indicators relating to children and young people.

2.0 Recommendations

- 2.1 That the Board notes the progress made during Quarter 2.
- 2.2 That remedial action is taken through the Post-Inspection Action Plan to improve performance in relation to the timeliness of Core Assessments.
- 2.3 That the Board endorses the proposal to Government Office Yorkshire and Humber to secure data for the stretch target L64 '2 hours or more of high quality PE and Sport within and beyond the curriculum'.
- 2.4 That action is prioritised by the Children's Trust Board to reduce the % of young people Not in Education, Employment or Training.

3.0 Monitoring arrangements for Local Area Agreement 2

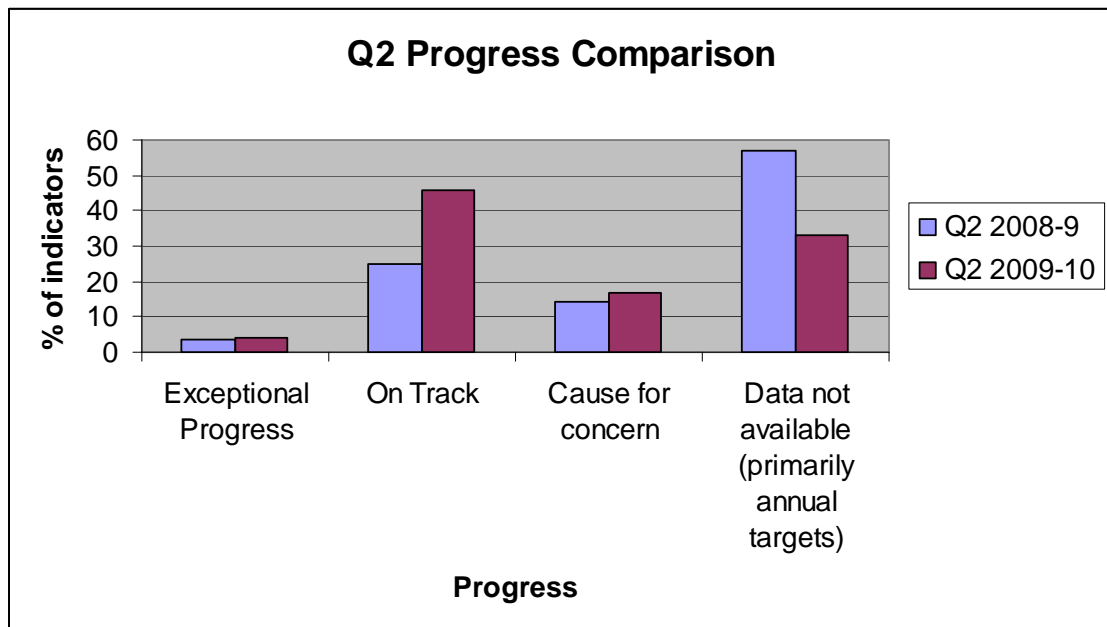
- 3.1 North Yorkshire Children's Trust has responsibility for twenty indicators as part of the North Yorkshire Strategic Partnership Local Area Agreement, with an interest in a further four (NI19 Rate of proven re-offending by young offenders; NI56 Obesity in primary school age children in year 6; NI112 Under 18 conceptions and NI115 Substance misuse in young people)
- 3.2 All designated and local indicators are reported quarterly, providing statistical information where it is available, by Target Lead Officers and submitted to the corporate performance team at North Yorkshire County Council. The Children Trust had a 100% return on targets within timescales for Quarter 2.
- 3.3 The full performance report for Local Area Agreement targets is reported to the North Yorkshire Strategic Partnership Executive, with papers and reports available at <http://www.nysp.org.uk/html/local-area-agreement>

4.0 Review of progress for Quarter 2 (July – September) 2009

- 4.1 Of the sixteen indicators able to provide statistical data for Quarter 2, 11 are classed as on track, or projected to be within 10% of target. One is showing exceptional progress (L62 Children placed out of County) and four are classed as causes for concern. An additional indicator L64 (% children accessing 2 or more hours of high quality PE and Sport within and beyond the curriculum) has also been flagged a cause for concern due to data collection issues. This is detailed in 5.3-5. An overview of the indicators is

provided in Appendices 1 and 2

- 4.2 Progress is slightly improved on Q2 last year overall, with more data available, showing an increase of indicators on track. However, there are slightly more indicators showing cause for concern at this point than last year.



Progress regarding Indicators Causing Concern at Quarter 1 2009-10

- 4.3 The timeliness of core assessments (NI60) continues to be flagged as a cause for concern. The % core assessments completed within 35 days of commencement has increased from Quarter 1 to 64%. This remains significantly below the annual target of 82%. During Quarter 2 this issue has been explored through the unannounced inspection and full inspection of Safeguarding and Looked After Children's Services.
- 4.4 The timeliness of assessment is a priority, both within the Children and Young People's Plan 2008-11 Year 2 revision and the Local Area Agreement. Significant resource has been allocated to improving capacity and performance within Children's Social Care, including the timeliness of core assessments. Urgent remedial action is being taken, and is detailed in the post-inspection action plan. Revised targets of 100% have been set for Q3 and Q4 to improve the total year performance.

Indicators causing concern during Quarter 2 2009-10.

- 4.5 The summary of indicators causing concern can be found in Appendix 1. Five indicators have been identified as causes of concern:
- NI 19: Rate of Proven Re-Offending
 - NI 60: Timeliness of Core Assessments (see 4.3)
 - NI 90: Take up of 14-19 Diplomas

- L 64: % 5-16 yrs olds accessing 2 hours of high quality PE or Sport within and beyond the curriculum (see 5.3-5)
- NI 117: % young people Not in Education, Employment or Training: NEET (see 5.6-9)

- 4.6 NI19 is reported a quarter in arrears. The data reported in October covers the April-June period. This data shows a re-offending rate of 0.42 for the first quarter. If this trend continues through the year, the target of 1.10 for the full year is unlikely to be met.
- 4.7 NI 90 Take up of 14-19 Diplomas. This is an annual target, based on the numbers of young people enrolling on 14-19 diploma courses. It was anticipated that the target would not be reached in 2009-10 and a revised target of 260 was agreed with GOYH at the annual refresh. This target has not been achieved, with 152 young people now enrolled on diploma courses.
- 4.8 Whilst this represents a tremendous increase on the 22 in 2008-9, proactive action will need to be taken to secure another substantial increase to achieve the target of 600 for 2010-11. NI 90 is a designated indicator and performance against this indicator in 2010-11 will affect the reward grant received by North Yorkshire at the end of the Local Area Agreement.

5.0 Stretch Targets

- 5.1 This is the final year for the 'stretch' indicators carried forward from Local Area Agreement 1. If these indicators meet their 'stretch' by end of March 2010 North Yorkshire will receive £3.6m (£1.2m per indicator).
- 5.2 Of the three stretch targets, only one (L58: % Healthy Schools) is on track.
- 5.3 L64: % 5-16 yrs olds accessing 2 hours of high quality PE or Sport within and beyond the curriculum is being flagged as a cause for concern in Quarter 2 for data collection issues. The data for this indicator is normally supplied through the national *Physical Education School Sports and Club (PESSCL)* Survey. This survey is carried out in June and reported in October.
- 5.4 The national survey has been changed for 2009-10 (2008-9 academic year) and it has been discovered that the national survey no longer includes the question required to obtain the data for L64. This is a significant problem as North Yorkshire is dependent on those results for the outturn data and stretch indicator results. If no data is available this jeopardises North Yorkshire's chance to claim stretch reward money.
- 5.5 To respond to this a proposal has been shared with Government Office Yorkshire and Humber (GOYH) to re-issue a short survey to local schools to obtain the data. This proposal is attached as Appendix 3. At the time of the report (30th October 2009), this proposal is being considered by GOYH.

- 5.6 NI 117: This indicator is being flagged as a cause for concern as it is currently predicted that this will not meet the stretch target, and therefore not obtain the full reward grant.
- 5.7 Quarter two generally sees an increase in the % of NEET and 'Not Known' as it covers the period of the summer holiday. As young people return to school, college or start employment or training the trend is for a rapid decrease in NEET and 'Not Known' during Quarter 3.
- 5.8 The stretch target is based on a snapshot of performance during November, December and January. The stretch target is 3.6% NEET as average for the period Nov 09 Dec 09 Jan 2010 with unknowns being no higher than 3.5%. As of the time of this report (end October 2009) the NEET has decreased from end of Quarter 2 to 4.7%, and the 'Not Known' significantly reduced to 1.8%.
- 5.9 Action is required to reduce the 4.7% NEET to an average of 3.6% during the next three months (November, December, January). A drop of 1% approximates to a further 180 young people to be engaged in education, employment and training.

Appendices:

Appendix 1: Stretch Targets and Indicators Causing Concern

Appendix 2: Summary of all children and young people LAA Indicators for Q1

Appendix 3: Proposal to GOYH for outturn data on L64

Report Prepared by:
Lynette Dodds
Principal Performance Officer
Performance and Outcomes Team (CYPS)

LAA Quarterly Monitoring: Children and Young People Stretch Targets

Ref.	Indicator	Lead Officer	Target 10/11	Target 09/10	Actual Q1	Actual Q2	Actual Q3	Actual Q4	Comments
L58	Percentage of schools achieving Healthy School Status.	Bridget Watt	85%	85%	78%	82%			On track
L64	% of 5 to 16 year olds accessing 2 or more hours of high quality PE and or school sport within and beyond the curriculum each week	Heather Newman	97%	97%	Annual Target. Not available Q1	Annual Target. Not available Q2			The PESSCL survey has changed and no longer includes this measure. Alternative arrangements are being pursued.
NI117	Average percentage of 16-18 year olds not in education, training or employment (NEET).	Louise Dunn	3.3% 3.5% not known	3.6% 3.5% not known	4.8% 3.8% not knowns	5.5% 13.3% not knowns			The NEET figure increases during Q2 due to school holidays. Figure for End October: 4.7% NEET, 1.8% Not Known

LAA Quarterly Monitoring: Children and Young People Targets Giving Cause for Concern

Ref.	Indicator	Lead Officer	Target 10/11	Target 09/10	Actual Q1	Actual Q2	Actual Q3	Actual Q4	Comment
NI60	Core Assessments for children's social care that were carried out within 35 days of their commencement	David Molesworth	84.0%	82.0%	57.4%	64%			Targets have been reviewed and immediate work in place to increase % through the post-inspection action plan
NI117	Average percentage of 16-18 year olds not in education, training or employment (NEET).	Louise Dunn	3.3% 3.5% not known	3.6% 3.5% not known	4.8% 3.8% not knowns	5.5% 13.3% not knowns			The NEET figure increases during Q2 due to school holidays. Figure for End October: 4.7% NEET, 1.8% Not Known
L64	% of 5 to 16 year olds accessing 2 or more	Heather Newman	97%	97%	Annual Target. Not	Annual Target. Not			The PESSCL survey has changed and no longer

	hours of high quality PE and or school sport within and beyond the curriculum each week				available Q1	available Q2			includes this measure. Alternative arrangements are being pursued.
NI90	Take up of 14-19 Learning Diplomas	Bruce Wood	600	260	Annual Target. Not available Q1	152			The take-up of 14-19 diplomas is significantly below target. This was predicted at the end of 2008-9 due to the number of diploma streams and average take-up from 2008-9.
NI 19	Rate of proven re-offending	Laurence Murray	1.06 (rate)	1.10	Not available	0.42			Reported in arrears. Quarter 1 unvalidated data The unfinalised position (prior to those young people who have turned 18 being PNC checked) is an average number of offences per cohort member of 0.42

Overview of all Indicators relating to Children and Young People for Quarter 2.

Ref.	Indicator	Lead Officer	Target 10/11	Target 09/10	Actual Q1	Actual Q2	Actual Q3	Actual Q4	Comments
Designated (reported to Government Office and North Yorkshire Strategic Partnership)									
NI 19	Rate of proven re-offending	Laurence Murray	1.06 (rate)	1.10	Not available	0.42			<p>Reported in arrears. Quarter 1 unvalidated data</p> <p>The unfinalised position (prior to those young people who have turned 18 being PNC checked) is an average number of offences per cohort member of 0.42</p>
NI 45	To increase the proportion of young offenders who are actively engaged in education, training and employment	Laurence Murray	64.0%	60.0%	55.4%	54.0%			Draft cumulative figure
NI 56	Obesity in primary school age children in Year 6	Katie Needham	16.3%	16.3%	Annual Target. Not available Q1	Annual Target. Not available Q2			2008-9 outturn = 15.2% (target 16.2%)
NI 60	Core Assessments for children's social care that were carried out within 35 days of their commencement	David Molesworth	84.0%	82.0%	57.4%	64%			Data updated August 2009.

Ref.	Indicator	Lead Officer	Target 10/11	Target 09/10	Actual Q1	Actual Q2	Actual Q3	Actual Q4	Comments
NI 81	Inequality gap in the achievement of a level 3 qualification by the age of 19	Bruce Wood	28%	30%	Annual Target. Not available Q1	Annual Target. Not available Q2			2008-9 outturn = 33% (target 32%)
NI 90	Take up of 14-19 Learning Diplomas	Bruce Wood	600	260	Annual Target. Not available Q1	152			
NI 112	Under 18 conception rate per 1,000 females 15-17 The change in rate for the calendar year for Scarborough	Carly Walker	30.0 per 1,000	34.4 per 1000	Annual Target. Not available Q1	Annual Target. Not available Q2			
NI 115	Reduce substance misuse by young people	Leigh Bell	2.8%	5.1%	Annual Target. Not available Q1	Annual Target. Not available Q2			2008-9 outturn= 7.3% (target set in 2008-9)
NI 117	Average percentage of 16-18 year olds not in education, training or employment (NEET).	Louise Dunn	3.6% 3.5% not known	3.6% 3.5% not known	4.8% 3.8% not knowns	5.5% 13.3% not knowns			The NEET figure increases during Q2 due to school holidays. Figure for End October: 4.7% NEET, 1.8% Not Known
Local (reported to North Yorkshire Strategic Partnership)									
L58	Percentage of schools achieving Healthy School Status.	Bridget Watt	85%	85%	78%	82%			
L61	Number of children living in kinship care as an alternative to being looked	David Molesworth	50	46	5	14			Data not validated. Cumulative figure

Ref.	Indicator	Lead Officer	Target 10/11	Target 09/10	Actual Q1	Actual Q2	Actual Q3	Actual Q4	Comments
	after								
L62	Number of looked after children placed out of North Yorkshire	David Molesworth	75	80	58	73			Data not validated. Exceptional Progress, achieved 2010-11 target
L64	% of 5 to 16 year olds accessing 2 or more hours of high quality PE and or school sport within and beyond the curriculum each week	Heather Newman	97%	97%	Annual Target. Not available Q1	Annual Target. Not available Q2			2008-9 outturn = 92% (target 92%)
L 70	Young People's Participation in Positive Activities	Chris McGee	16990 young people (a), attending 228157 hours of positive activities (b)	a) 16,990 b) 2117,292	a) 4740 b) 53833	a) 9376 b) 125418			
Statutory (Department for Children Schools and Families mandatory indicators – set on a two year basis, 2010-11 targets not available as yet. Attainment Targets are 'aspirational' and therefore those within 10% of target are classed as on track									
NI 72	Achievement in the Early Years Foundation Profile	Julia Evans	n/a	55.0%	Not available	55.3%			2008-9 outturn = 52.2%. Improvement
NI 73	Level 4 or above in English and Maths at Key Stage 2	Julia Evans	n/a	81%	Not available	75%			2008-9 outturn = 76.5%. Decrease on last year
NI 75	5 or more grades A*-C at GCSE including English and Maths	Janet Bates	n/a	62.4%	Not available	58.4%			2008-9 outturn = 55.2%. Improvement

Ref.	Indicator	Lead Officer	Target 10/11	Target 09/10	Actual Q1	Actual Q2	Actual Q3	Actual Q4	Comments
NI 87	Secondary school persistent absence	Dave Griffen	4.2%	4.70%	Not available	4.8%			2008-9 outturn = 4.3%. Provisional Data
NI 92	Narrowing the gap in the Early Years Foundation Profile	Julia Evans	n/a	31.8%	Not available	30.90%			2008-9 outturn = 34.6%. Improvement on target
NI 93	Progression by 2 levels in English between Key Stages 1 and 2	Julia Evans	n/a	89%	Not available	82%			2008-9 outturn = 82.6%.
NI 94	Progression by 2 levels in Maths between Key Stages 1 and 2	Julia Evans	n/a	89%	Not available	83%			2008-9 outturn = 80.4%. Improvement
NI 99	Children in care reaching Level in English at Key Stage 2	Alan Clifton	n/a	50% (11 pupils)	Not available	Not available			2008-9 outturn = 23.5% 4 pupils (target 50% 10 pupils)
NI 100	Children in care reaching Level in Maths at Key Stage 2	Alan Clifton	n/a	50% (11 pupils)	Not available	Not available			2008-9 outturn = 23.5% 4 pupils (target 60% 12 pupils)
NI 101	Children in care achieving 5 GCSEs A*-C including English and Maths	Alan Clifton	n/a	20% (7 pupils)	Not available	Not available			2008-9 outturn = 12.5% 5 pupils (target 7.14% 3 pupils)

L64: Encourage and enable children and young people to take physical exercise and to participate in sport and leisure

Indicator by which performance will be measured:

% of 5-16 year olds accessing two hours or more of high quality physical education and/or school sport within and beyond the curriculum each week, as measured by data from the national annual Physical Education School Sports and Club Survey _ PESSCL (undertaken in July and published in October)

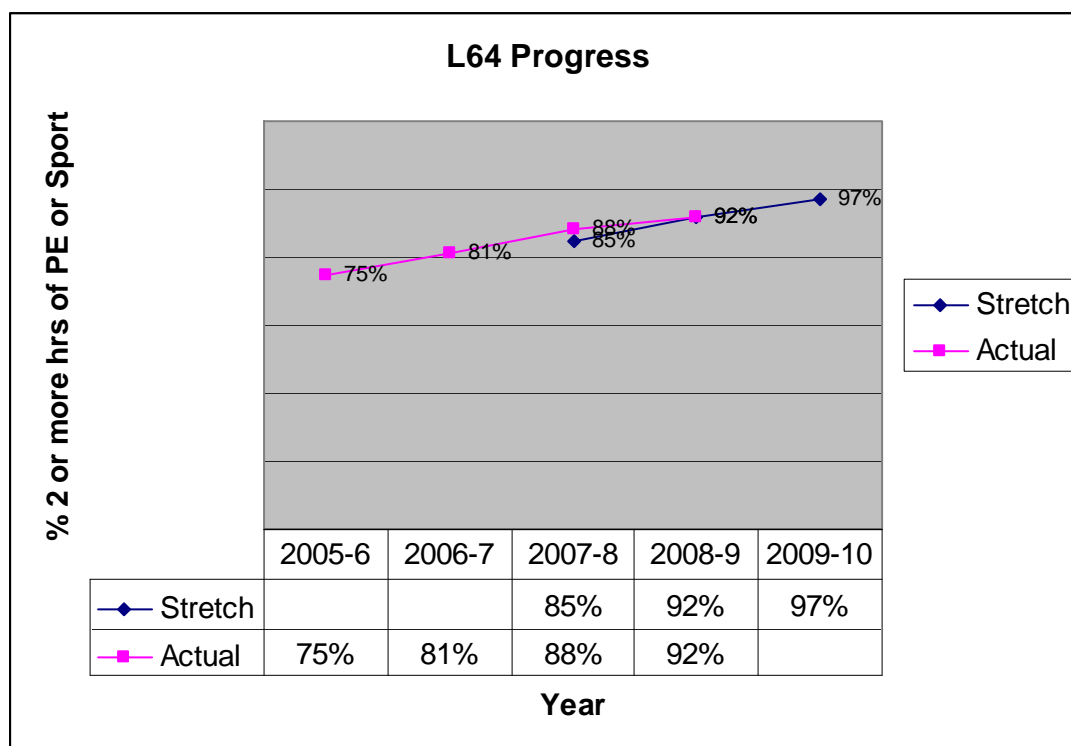
Background

This indicator was included as a ‘stretch’ target in the first Local Area Agreement, to achieve a stretch of 97% by 2009-10. If the stretch is achieved North Yorkshire will be able to claim up to £1.2million.

This indicator was carried forward into Local Area Agreement 2 (2008-11) as a local indicator.

The measure of this indicator comes from the national PESSCL survey through the question: “Percentage of pupils who participated in at least two hours of high quality PE and out of hours school sport in a typical Week”. This is analysed a research company on behalf of the DSCF, and aggregated to a local authority figure.

Progress against this indicator has been good, with the stretch achieved for 2007-8 and 2008-9.



This measure pre-dates the National Indicator Set, which created a new indicator for children to access 5 hours of high quality PE and Sport within and beyond the curriculum each week.

2009-10 Outturn

The national survey has changed in 2009-10 (the survey was undertaken summer 2009) to comply with the National Indicator Set and the new strategy 'PE and Sport Strategy for Young People'. The revised survey no longer includes the question used to provide the outturn data for this indicator.

The question asked in the 2009-10 survey:

*'What is the total number of pupils in each year group who participate in at least **three** hours of high-quality PE & out of school hours school sport in a typical week.'*

This is not comparable to the 'two' hours, and therefore cannot be used as the outturn data. The format of the questionnaire submitted to the national survey team provides only the numbers, rather than pupil level data, so it is not possible to determine the actual % accessing 2 hours or more within and beyond the curriculum from the raw data, as there is a risk of double counting.

Proposal

In order to obtain outturn data for 2009-10, it is proposed that a short survey is re-issued to schools in North Yorkshire. This survey would include the original question and a comparator question (i.e one that was asked in the 2009-10 survey) to support data validation.

Issues to consider:

1. As the indicator question has not been included in the national survey, re-issuing a short survey to schools will bring additional cost and additional workload for school's sport coordinators.

To help mitigate these unforeseen costs, it is proposed that some of the current underspend in the Pump Priming Grant is used to provide a contribution to cover pay for school staff, and to cover the cost of the survey and analysis.

2. The survey is conducted by a contracted national research company, with data aggregated to local authority level. This ensures independent analysis for the survey. However, the weightings applied to the national survey in the case of non-completion by some schools are not known, and may not be able to be applied to the local survey.

To help mitigate these issues, it is proposed that the survey and analysis is conducted by an external agency, rather than Children's Services to ensure independence.

3. The data will not be comparable with other areas, as this question was not asked in the original survey, and the issuing of a second survey will mean a change to the original timescale. The question has originally be asked in June, to be published in October.

It is proposed that the additional question is asked during the autumn term, following half term, to enable analysis and reporting at the end of Q3, as usual.

This work will be led by the target lead officer (Heather Newman, Quality and Improvement, CYPS), in conjunction with the Thematic Partnership Monitoring Officer (Lynette Dodds, Performance and Outcomes, CYPS)

Lynette Dodds
Principal Performance Officer
27.10.09