



GOVERNMENT OFFICE  
FOR YORKSHIRE AND THE HUMBER

# Your Climate, Our Future

## National and Regional Climate Change policy in York and North Yorkshire

Tim Godson

Climate Change Team

GOYH

- [Tim.godson@goyh.gsi.gov.uk](mailto:Tim.godson@goyh.gsi.gov.uk)



GOVERNMENT OFFICE  
FOR YORKSHIRE AND THE HUMBER

# A few possible views of North Yorkshire?





# CONTENT

- Nationally provided data
- Key National Policies
- Regional Response

# UK Climate Projections 2009

## Regional Data – Yorkshire and Humber

# What are the Projections?

[www.defra.gov.uk/adaptation](http://www.defra.gov.uk/adaptation)

- **Produced by a consortium of organisations**
- **A range of futures – 3 emission scenarios up to 2099**
- **Probabilities – not a weather forecast**

**Maps of the UK for:**

✓ **Temperature**

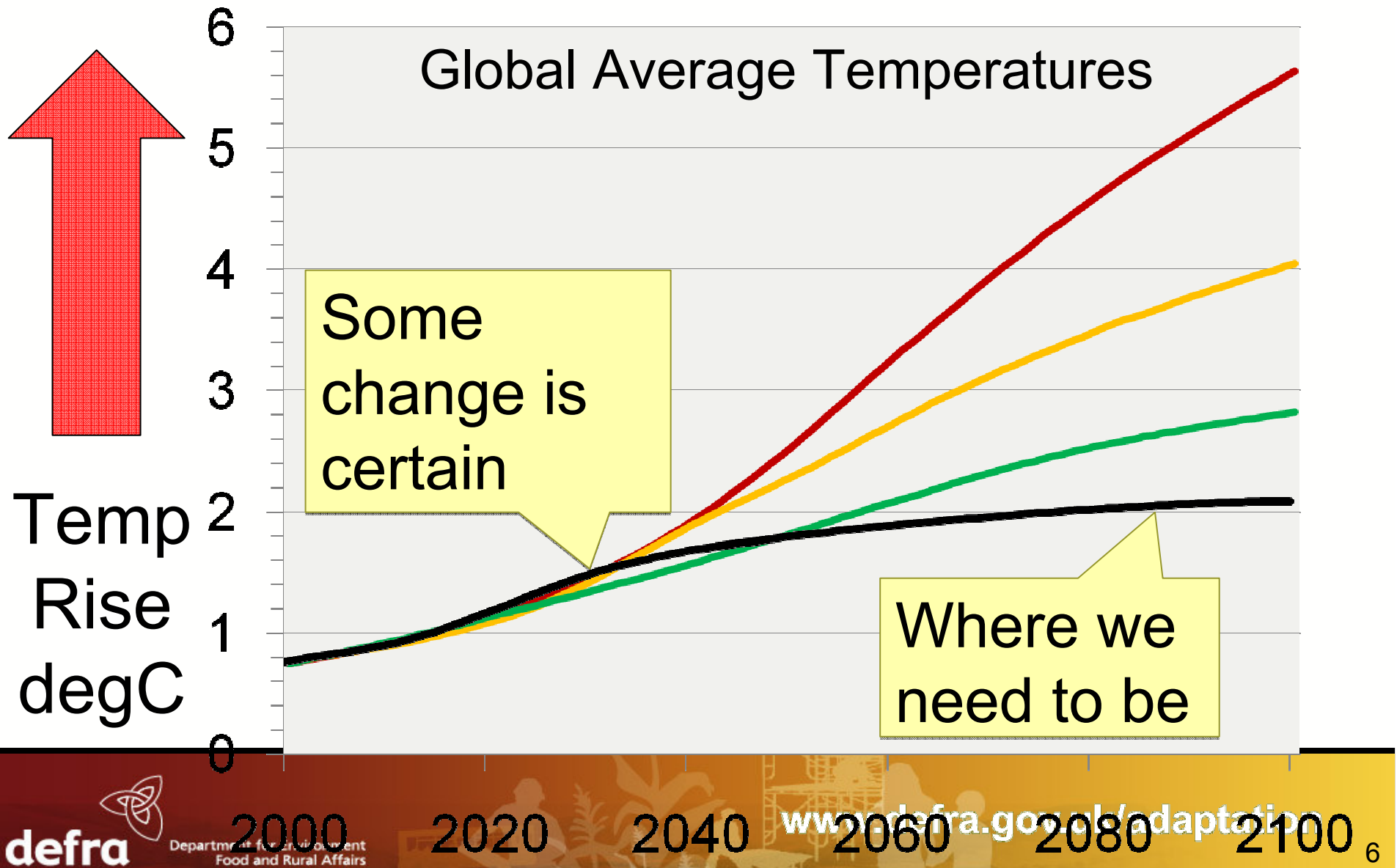
✓ **Rainfall**

✓ **Sea level**

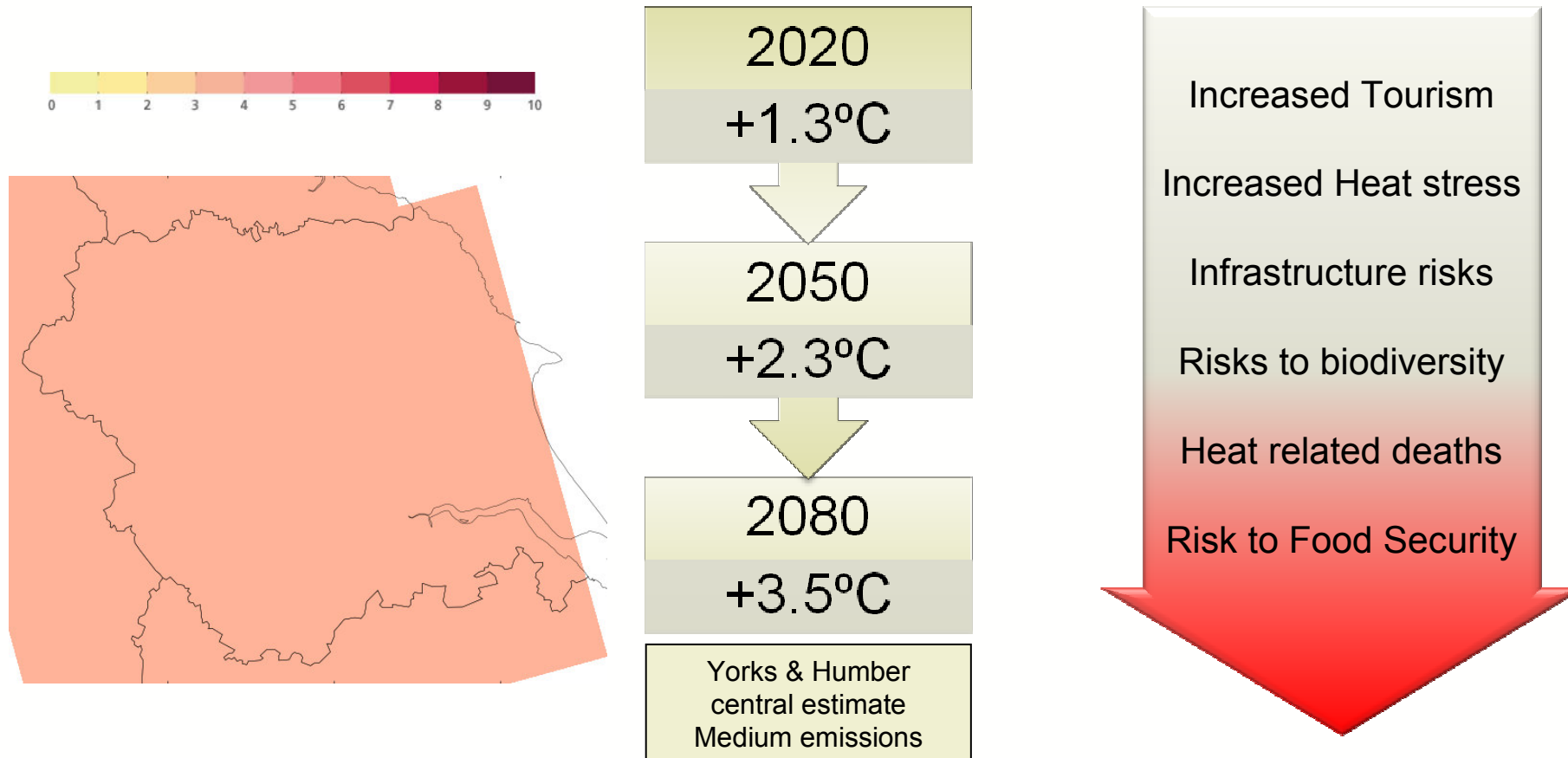
**on a 25 x 25 km grid**

# What are they based on?

[www.defra.gov.uk/adaptation](http://www.defra.gov.uk/adaptation)

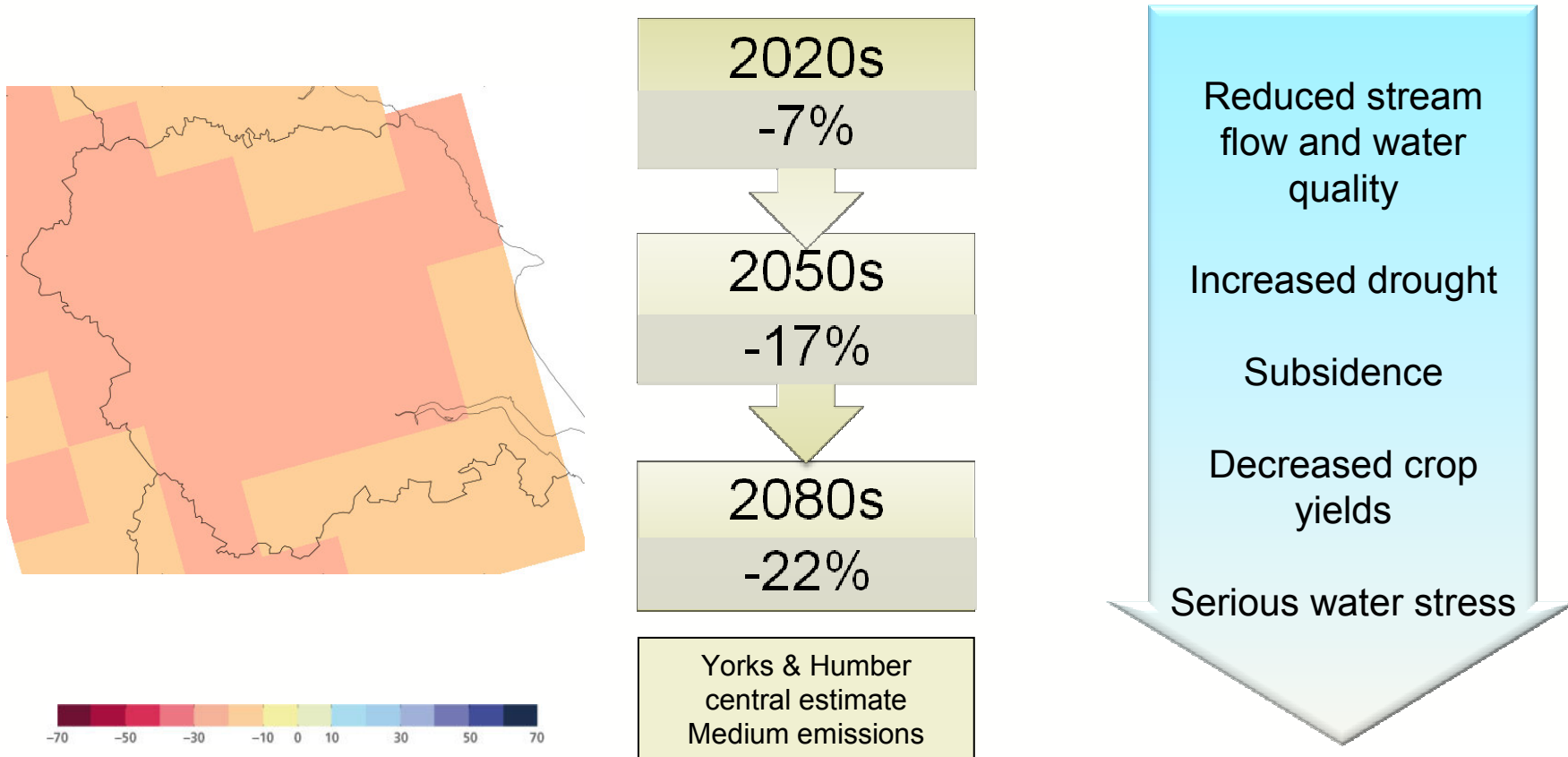


# For summer average temperature, we see significant increases over the decades to the 2080



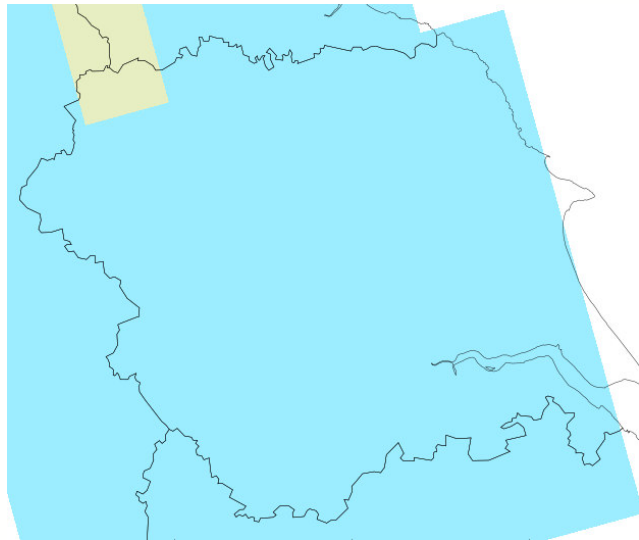
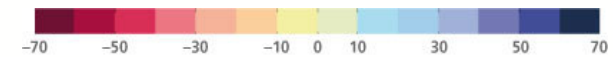
The change for the 2080s is very unlikely to be less than 1.8°C and very unlikely to be more than 5.8°C

# For rainfall we could see significant summer decreases



For the 2080s the change is very unlikely to be lower than -43% and very unlikely to be higher than +1%

# For rainfall we see significant winter increases



2020s

+4.1%

2050s

+11%

2080s

+15%

Yorks & Humber  
central estimate  
Medium Emissions

Increased winter  
flooding

Increased subsidence

Risks to urban  
drainage

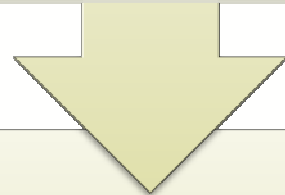
Severe Transport  
disruption

Risks of national  
Infrastructure

For the 2080s the change is very unlikely to be lower than +2% and very unlikely to be higher than +33%

2040

Bridlington:	18cm
Hull:	18cm



2080

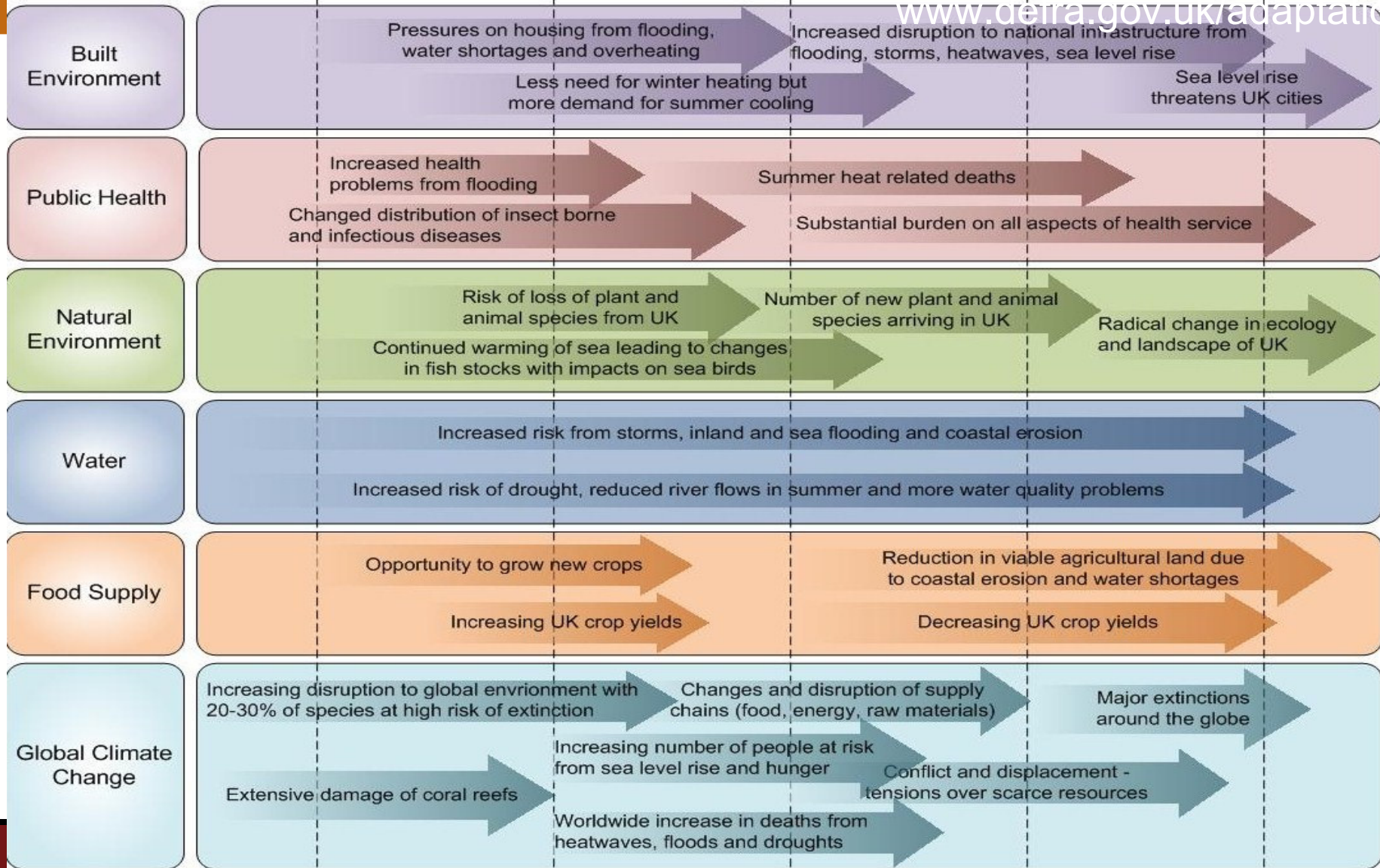
Bridlington:	36cm
Hull:	37cm



Temperature Change relative to pre-industrial

1°C                      2°C                      3°C                      4°C                      5°C

[www.defra.gov.uk/adaptation](http://www.defra.gov.uk/adaptation)



# How to access the projections

- Further information can be found on the Defra website at:

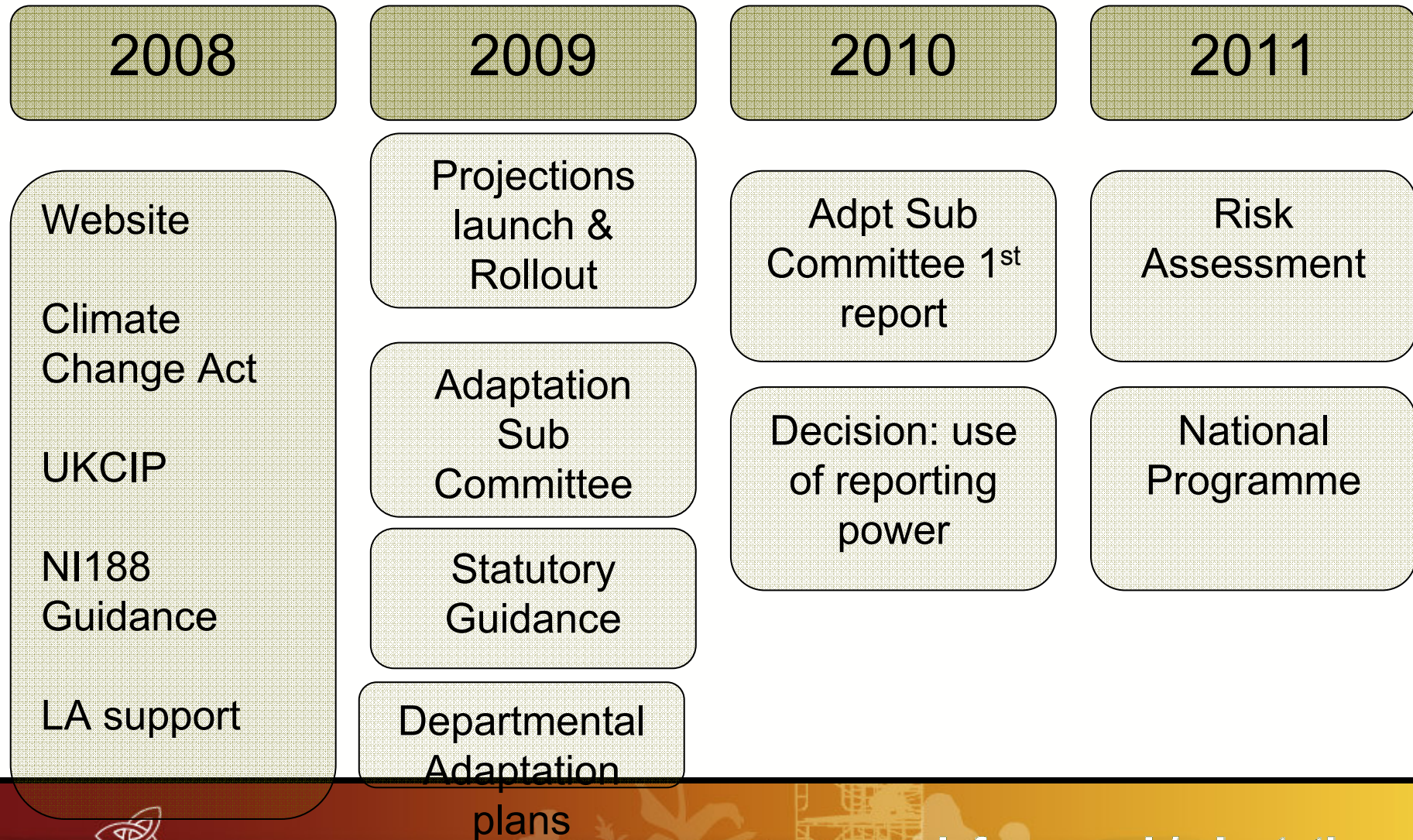
[www.defra.gov.uk/adaptation](http://www.defra.gov.uk/adaptation)

- For detailed access to the UKCP User Interface go to:

<http://ukclimateprojections.defra.gov.uk>

# Defra adaptation policy - achieved much in 2008, with 2009 being a key year linking to long term statutory framework

[www.defra.gov.uk/adaptation](http://www.defra.gov.uk/adaptation)

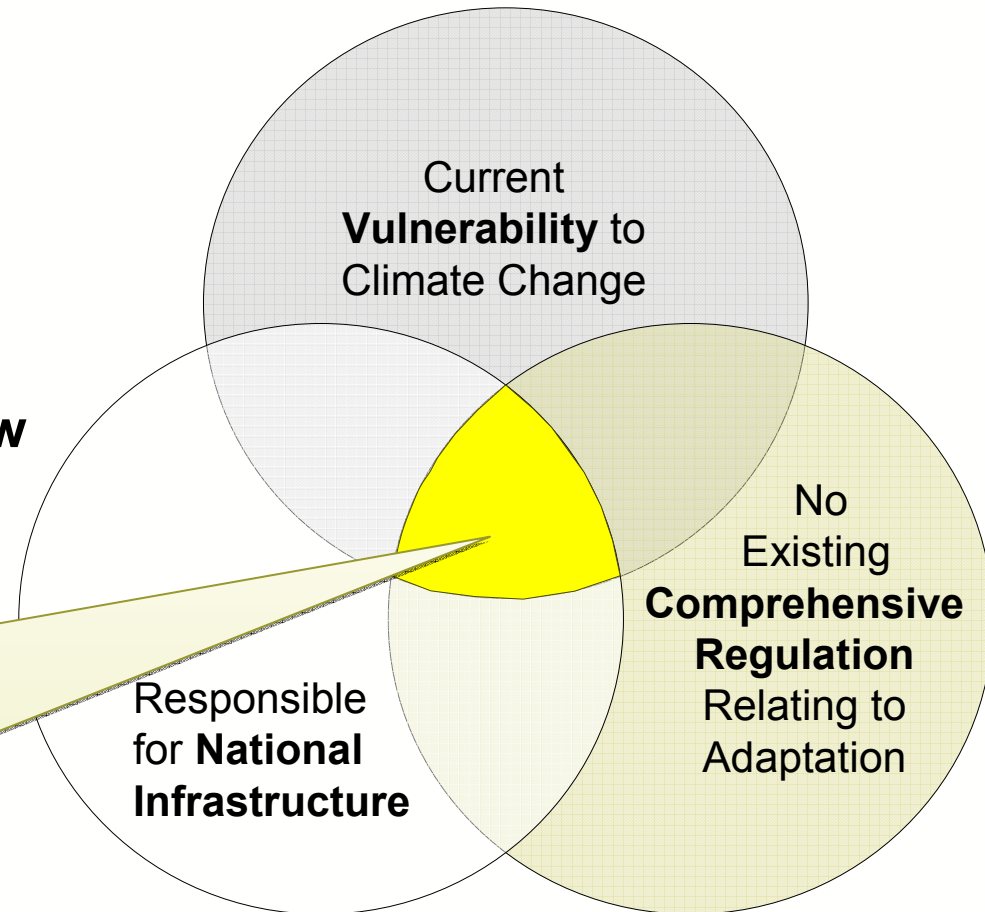


# Adaptation Reporting Power

[www.defra.gov.uk/adaptation](http://www.defra.gov.uk/adaptation)

- **key sectors to report on the impacts to them of climate change**
- **Primary lever for Govt**
- **Consultation happening now**

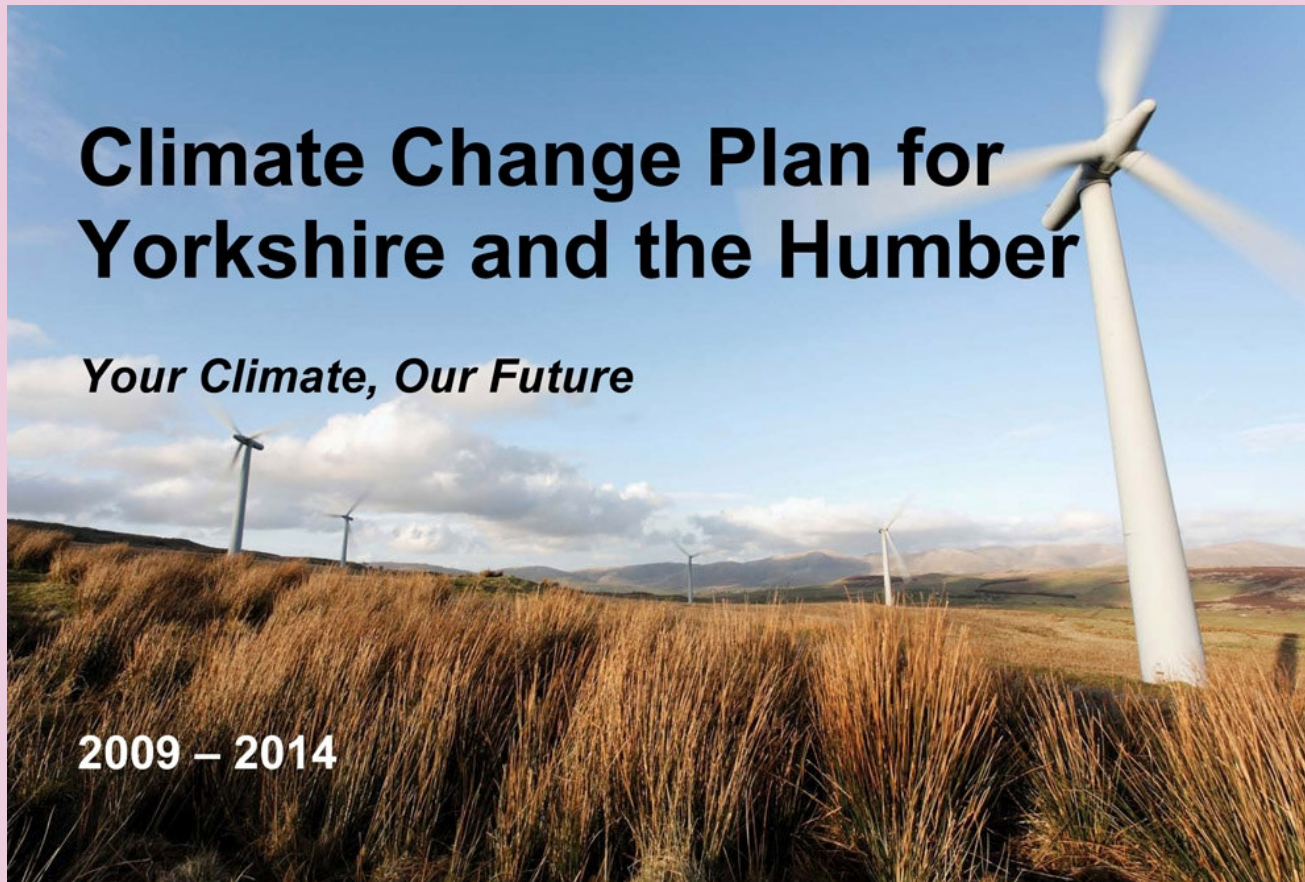
**Energy**  
**Water**  
**Electronic communications**  
**Emergencies**  
**Health & social care**  
**Transport**  
**Environment**





GOVERNMENT OFFICE  
FOR YORKSHIRE AND THE HUMBER

# ACTION AT THE REGIONAL LEVEL





## The Vision

- New industries for a low carbon economy
- Businesses using carbon trading effectively
- Being more resource efficient
- Preparedness for weather extremes
- Zero carbon development and retro-fitting
- Transportation modal shift
- Agriculture and forestry well adapted
- A healthy and green urban and natural environment



## Key Priorities

- Strategy and monitoring
  - The built environment
  - Transport
  - Health Services
  - Business
  - Land management
  - Citizen engagement
- 
- Mostly being taken forward by existing groups and Boards – progress reported to Partnership



# Cross Cutting Themes

- Energy
- Waste
- Water





## Delivery Mechanisms

- Integrated regional strategy
- Regional improvement and efficiency partnership
- Local area agreements
- Networks



GOVERNMENT OFFICE  
FOR YORKSHIRE AND THE HUMBER

[www.adaptyh.co.uk](http://www.adaptyh.co.uk)

**Yorkshire and Humber  
Regional Adaptation Study**



**Weathering the Storm**

# Regional Key Messages



GOVERNMENT OFFICE  
FOR YORKSHIRE AND THE HUMBER

- Yorkshire and Humber Region is at particularly at risk from the impacts of climate change and we have to prepare for this, the new Projections confirm that if we fail to act to reduce emissions this could get much worse across the region in years to come.
- We must start to prepare for a changing climate and the other calls on our natural resources. We need to start planning and acting now in vulnerable areas like York and North Yorkshire – to seize opportunities as well as deal with impacts

# Conclusion



GOVERNMENT OFFICE  
FOR YORKSHIRE AND THE HUMBER

- Co-ordination at regional level
- Increasing level of evidence to inform actions
- Delivery being taken forward at the local level
- Sub-regional approach supported by the Regional Improvement and Efficiency Partnership needs to galvanise local action



GOVERNMENT OFFICE  
FOR YORKSHIRE AND THE HUMBER

## Further Information

[jon.clubb@lgyh.gov.uk](mailto:jon.clubb@lgyh.gov.uk)

Local Government Yorkshire & Humber

18 King Street

Wakefield

WF1 2SQ

**Tel.** 01924 331631

**Mobile.** 07970 120827