



North Yorkshire Strategic Partnership Conference: the Big Society

Isobel Mills



North Yorkshire Strategic Partnership Conference: the Big Society



GOVERNMENT OFFICE
FOR YORKSHIRE AND THE HUMBER

- **About the Big Society**
- **Key components**
- **Doing it already?**
- **Positioning North Yorkshire**
- **Things to think about**



About the Big Society



GOVERNMENT OFFICE
FOR YORKSHIRE AND THE HUMBER



- **Too much centralism has squashed creativity and common sense**
- **Smarter state, simpler state**
- **Doing everything at the lowest possible level**
- **Giving away power – to local institutions, communities, individuals...**
- **...and with it more responsibility to co-create better quality of life**



Key components



GOVERNMENT OFFICE
FOR YORKSHIRE AND THE HUMBER

- **Empowering citizens and neighbourhoods**
- **Encouraging local control of public spending**
- **Removing bureaucratic burdens**
- **Enhancing local democratic accountability**
- **Transparent local information about costs and services**
- **Stimulating more diverse local service suppliers**



Doing it already – empowering citizens and neighbourhoods



GOVERNMENT OFFICE
FOR YORKSHIRE AND THE HUMBER



- **Neighbourhood management**
- **Transfer of assets**
- **New forms of community involvement**
- **Community Empowerment Panel**



Doing it already – enhancing local democratic accountability



GOVERNMENT OFFICE
FOR YORKSHIRE AND THE HUMBER

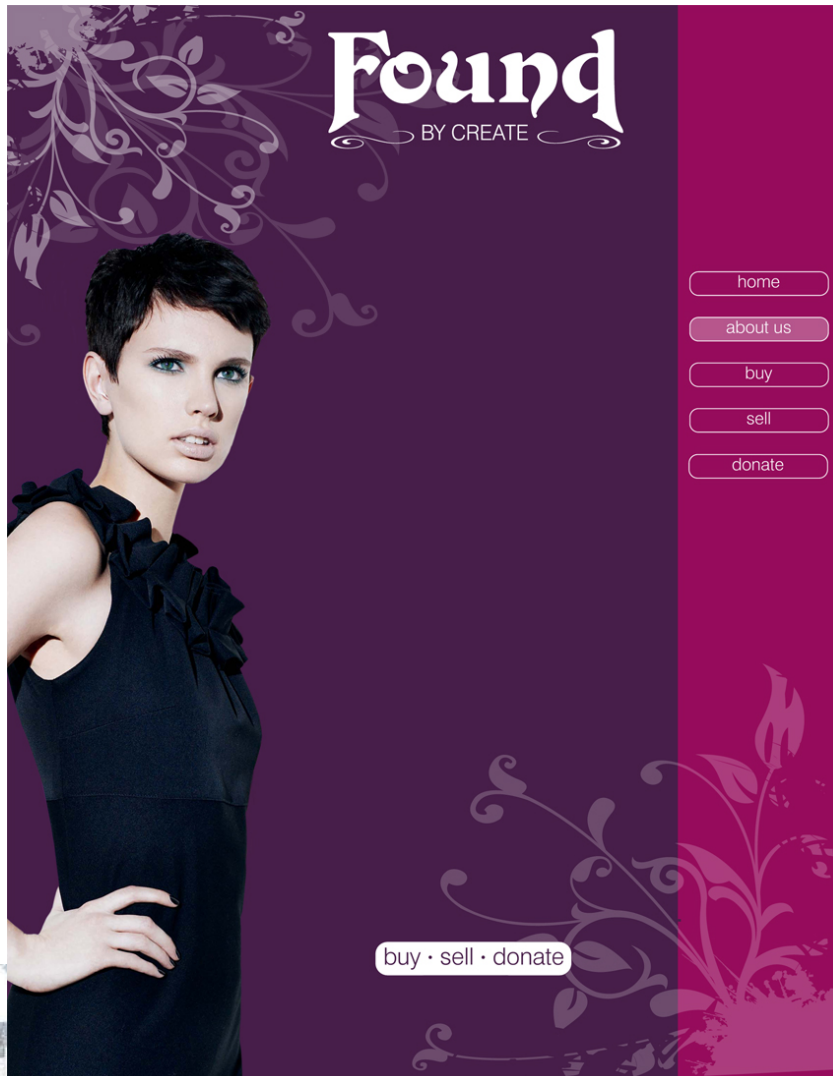
- **Community assemblies**
- **Taking budget discussions out to ward forums**
- **The best member training**
- **Upcoming ideas about “right to run” services and assets**



Doing it already – more diverse local service suppliers



GOVERNMENT OFFICE
FOR YORKSHIRE AND THE HUMBER



- A number of YH areas involved in community budgets – four in local integrated services study group
- Strong social enterprise tradition
- Strong partnerships
- Strong charity, SE, voluntary and community sector
- Highly innovative



Positioning North Yorkshire



GOVERNMENT OFFICE
FOR YORKSHIRE AND THE HUMBER

- In the lead already on participatory budgeting ...



Positioning North Yorkshire



- **Great examples of loved community buildings kept in use...**



Positioning North Yorkshire

- **Innovative community services....**



Positioning North Yorkshire



- Award winning social enterprises...



Positioning North Yorkshire



GOVERNMENT OFFICE
FOR YORKSHIRE AND THE HUMBER

- **Neighbourhood planning**
- **Community right to build**
- **ACRE work on community led planning**
- **Experience to share in Eden Valley – and Holy Island**



Things to think about



- **Big Society – everywhere?**
- **Integrating services – does sparse population lend itself to this?**
- **New ways of working and new ways of getting to choices**
- **personalisation**



Finally...



GOVERNMENT OFFICE
FOR YORKSHIRE AND THE HUMBER

Any fool can make things bigger, more complex and more violent. It takes a touch of genius – and a lot of courage – to move in the opposite direction



Albert Einstein

