

North Yorkshire Sustainable Community Strategy Evidence Base (November 2007)

Please contact the 'Performance, Research and Intelligence Team' at North Yorkshire County Council for more information about this document; the data it includes; and / or, if you would like the document in another language, or format such as Braille, large print or audio.

Chief Executive's Group
North Yorkshire County Council
County Hall
Northallerton
North Yorkshire
DL7 8AD
Tel. 0845 8 72 73 74
performance@northyorks.gov.uk



Contents

Section	Theme
1	The County's Geography
2	Population Dynamics
3	Lifestyles
4	Education
5	Economy
6	Transport
7	Housing
8	Crime
9	Health and Inequalities
10	Conclusions

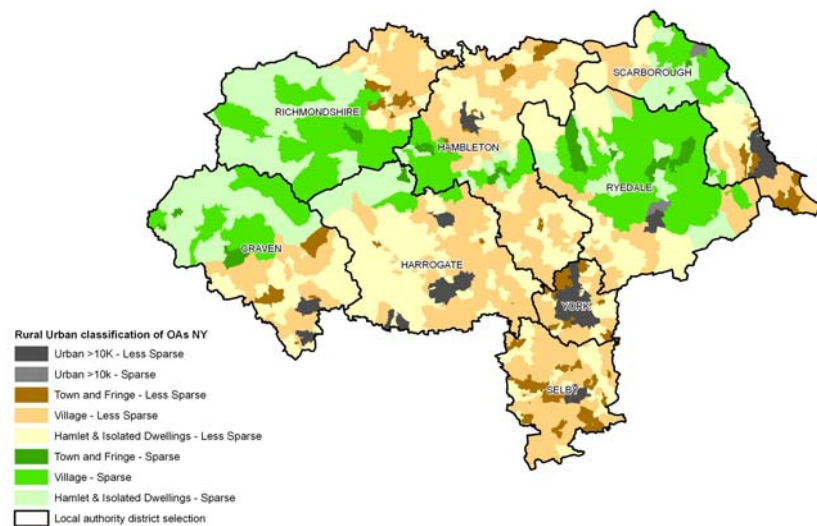
1.0 THE COUNTY'S GEOGRAPHY

- 1.1 North Yorkshire is the Country's most beautiful and varied County with stunning countryside and coast and rich heritage:
- two of England's 9 National Parks in the Yorkshire Dales and the North York Moors
 - the Heritage Coast
 - three Areas of Outstanding Natural Beauty (AONB)
 - 244 Sites of Special Scientific Interest (SSSIs)
 - over 12,000 listed buildings and many thousands more monuments and archaeological sites, including Fountains Abbey, a World Heritage Site.
- 1.2 Most of the County constitutes the catchment for the Yorkshire Ouse with the river Rye and Derwent draining the North York Moors and the Swale, Ure, Nidd and Wharfe draining the Yorkshire Dales.
- 1.3 This wonderful environmental setting brings with it some challenges, however, arising partly from low population densities and partly from the nature of the rural economy.
- 1.4 RURALITY
- 1.4.1 North Yorkshire is England's largest County covering 3,102 square miles from the North Sea in the East to within 10 miles of the Irish Sea in the West. But with only 582,000 people in the County, it has the second lowest population density (after Northumberland) at 71 people/Km² compared to the UK local authority mean of 1323 people/Km². The North Yorkshire population density ranges from 34 people/Km² in Ryedale to 131 people/Km² in Scarborough.
- 1.4.2 Only 20% of the population lives in the two main towns of Harrogate (73,670 people) and Scarborough (49,390 people). These two places are key urban centres in the County, providing their residents, surrounding

communities and visitors with a wide range of opportunities and services. The remaining 80% of the population lives in the County's Market Towns and smaller villages in a very dispersed pattern of settlements. Importantly over 40% of the population lives in settlements with fewer than 3,000.

1.4.3 Figure 1 below uses the DEFRA 'Rural Definition' to illustrate how rural and sparsely populated the County is. Also below, Table 1 illustrates the distribution of the County's population across each of the County's seven District Authority areas in 2001 and 2006.

Figure 1. Rural North Yorkshire¹



¹ SOURCE: DEFRA

1.4.4 The dispersed population presents significant challenges to service provision by the public, voluntary, and private sectors. Many people do not have easy access to settlements with a wide range of services and most settlements do not have a sufficiently large catchment population to support a wide range of services.

Table 1. Distribution of Population across North Yorkshire in 2001 and 2006²

	Hambleton	Harrogate	Ryedale	Selby	Scarborough	Richmondshire	Craven	North Yorkshire
Population in 2001	84,200	151,500	50,900	76,600	106,200	47,100	53,700	570,200
Population in 2006 (estimated)	86,300	157,800	52,900	79,800	108,300	51,000	55,500	591,600
% Population Increase (2001 - 2006)	2	4	4	4	2	8	3	4

1.4.5 Provision of community-based services is inherently more costly than in urban areas. With the exception of Scarborough, in comparison with England as a whole, each District has at least twice as many communities that are in the poorest fifth of English Low Level Super Output Areas (total LSOAs 34378) for access to a GP surgery, primary school, post office and food shop. Particularly high proportions of such communities are to be found in Richmondshire (44%) and Ryedale (37%). Access as poor as this can lead to isolation and a risk of social exclusion for less advantaged people in our rural communities

² SOURCE: Office for National Statistics

2.0 POPULATION DYNAMICS

2.1 AGE

2.1.1 Table 2 below illustrates the age of the County's population and the distribution of age groups across each District Authority area in 2006.

2.1.2

- Harrogate and Scarborough District Authority Areas are home to more people than any other District Authority area of the County.
- In 2006, the largest sized age group in the County was aged 40 – 44 years. Most people in this age group lived in either the Harrogate, Scarborough or Hambleton District Authority areas of the County.
- In 2006, the smallest sized age group in the County was aged under 1 year. Most people in this age group lived in either the Harrogate, Scarborough or Selby District Authority areas of the County.
- In 2006, across the County, 139,000 people (approximately 24% of the total population) were aged 0 – 19 years. Most people in this age group (almost 38,000 people or 27% of the County's total population aged 0 – 19 years) lived in the Harrogate District Authority area of the County. Ryedale District Authority area was home to the smallest number (just over 12,000 people or 9% of the County's total population aged 0 – 19 years) of such people.
- In 2006, across the County, 219,000 people (approximately 39% of the total population) were aged 20 – 49 years. Most people in this age group (almost 61,400 people or 28% of the County's total population aged 20 – 49 years) lived in the Harrogate District Authority area of the County. Ryedale District Authority area was home to the smallest number (just over 17,800 people or 8% of the County's total population aged 20 – 49 years) of such people.
- In 2006, across the County, over 230,000 people (approximately 39% of the total population) were aged

50+. Most people in this age group (almost 59,000 people or 25% of County's total population aged 50+) lived in the Harrogate District Authority area of the County. Richmondshire District Authority area was home to the smallest number (just over 17,000 people or 7% of the County's total population aged 50+) of such people.

Table 2. North Yorkshire's Population by Age Group (2006)³

	Hambleton	Harrogate	Ryedale	Selby	Scarborough	Richmondshire	Craven	North Yorkshire
Age of Population, under 1	800	1,500	400	900	1,000	500	500	5,600
Age of Population, 1 - 4	3,500	6,500	1,900	3,500	4,100	2,300	1,900	23,700
Age of Population, 5 - 9	4,700	8,600	2,700	4,500	5,300	3,100	3,000	31,900
Age of Population, 10 - 14	5,300	9,900	3,400	5,400	6,500	3,000	3,600	37,100
Age of Population, 15 - 19	5,300	11,200	3,800	5,700	7,100	3,900	3,700	40,700
Age of Population, 20 - 24	4,300	7,900	1,900	3,500	5,700	3,800	2,200	29,300
Age of Population, 25 - 29	3,400	7,900	2,100	3,600	4,500	3,200	2,200	26,900
Age of Population, 30 - 34	4,200	9,200	2,600	4,900	5,200	3,000	2,700	31,800
Age of Population, 35 - 39	5,900	11,800	3,400	6,200	6,600	3,600	3,700	41,200
Age of Population, 40 - 44	7,000	12,900	4,000	6,900	7,700	3,600	4,300	46,400
Age of Population, 45 - 49	6,500	11,700	3,800	6,300	7,600	3,400	4,200	43,500
Age of Population, 50 - 54	5,900	10,100	3,700	5,400	7,200	3,000	3,800	39,100
Age of Population, 55 - 59	6,800	11,000	4,300	6,100	8,700	3,500	4,400	44,800
Age of Population, 60 - 64	5,900	9,300	3,800	4,800	7,500	2,900	3,800	38,000

³ SOURCE: Registrar General's Revised Mid-Year Estimates for 2001 & Mid-Year Estimates for 2006; ONS; Crown Copyright. Compilation and Analysis: NYCC Performance, Research and Intelligence Team.

Age of Population, 65 - 69	5,000	7,800	3,100	3,500	6,400	2,400	3,100	31,300
Age of Population, 70 - 74	4,000	6,600	2,700	3,100	5,500	2,000	2,700	26,600
Age of Population, 75 - 79	3,300	5,600	2,300	2,400	4,800	1,500	2,300	22,200
Age of Population, 80 - 84	2,300	4,200	1,600	1,800	3,600	1,100	1,700	16,300
Age of Population, 85+	1,900	4,100	1,400	1,500	3,300	1,000	1,700	14,900
TOTAL	86,000	157,800	52,900	80,000	108,300	50,800	55,500	591,300

2.2 POPULATION GROWTH

2.2.1 By 2020, the population of the County is expected to be 620,600, this would be an increase of 6%. Most of this population growth will be in the 65+ age group. Conversely the population aged under 19 is forecast to decline, as is the number of people aged 35 – 49 years.

2.2.2 The rate of increase of the population aged 65 years and over is expected to vary between 36% in Scarborough district and almost 50% in Selby district.

Such increases in the numbers of older people in North Yorkshire will create substantial additional pressures on social and health care services across the County. This pressure could be increased further by the decline in 35 – 49 age group and the long hours work culture in North Yorkshire impacting on the provision of unpaid care

2.2.3 There is a comparatively smaller proportion of adults in their twenties in the population, which is approximately 4% less compared to the English average in all Districts aside from Richmondshire (Table 2). In part it reflects a trend towards smaller families particularly in the more affluent social groups.

2.3 MINORITY ETHNIC POPULATION

2.3.1 Table 3 below identifies with the composition of North Yorkshire's population by ethnic group in 2005 and 2030 (estimated) and illustrates the composition of each District Authority's population by ethnic group during this

time period. Amongst other things, the Table identifies:

- Between 2005 and 2030, across the County as a whole, there will be an increase in the size of the different ethnic groups which make up the County's total population.
- Most notably, the Table shows that between 2005 and 2030, it is estimated that there will be:
 - An overall 22% increase in the size of the County's 'White Ethnic Group' population. The biggest increase in the size of the population in this Group is anticipated to be in the Richmondshire District Authority area (20%).
 - An overall 70% increase in the size of the County's 'Mixed Ethnic Group' population. Notably, there will be a 141% increase in the size of this population Sub-Group in Selby and a 127% increase in the size of this population Sub-Group in Ryedale.
 - An overall 49% increase in the size of the County's 'Black Ethnic Group' population. There will however be a 19% reduction in the size of this population Sub-Group in the Hambleton District Authority area and an 88% increase in the size of this population Sub-Group in the Harrogate District Authority area.
 - An overall 10% increase in the size of the County's 'Chinese and Other Ethnic Group' population. There will however be a 41% reduction in the size of this population Sub-Group in the Richmondshire District Authority area and a 78% increase in the size of this population Sub-Group in the Scarborough District Authority area.
 - An overall 37% increase in the size of the County's 'Asian Ethnic Group' population. There will however be a 17% reduction in the size of this population Sub-Group in the Harrogate District Authority area and a 111% increase in the size of this population Sub-Group in the Selby District Authority area.

2.3.2 Figure 2 also below illustrates the change in populations according to Ethnic Sub-Group across the County and

the region as a whole. Amongst other things, this shows that:

- Across the region as a whole, between 2005 – 2030, it is estimated that there will be particular increases in the size of the following Ethnic Sub-Groups of the population: 'Chinese and Other' and 'Mixed'.

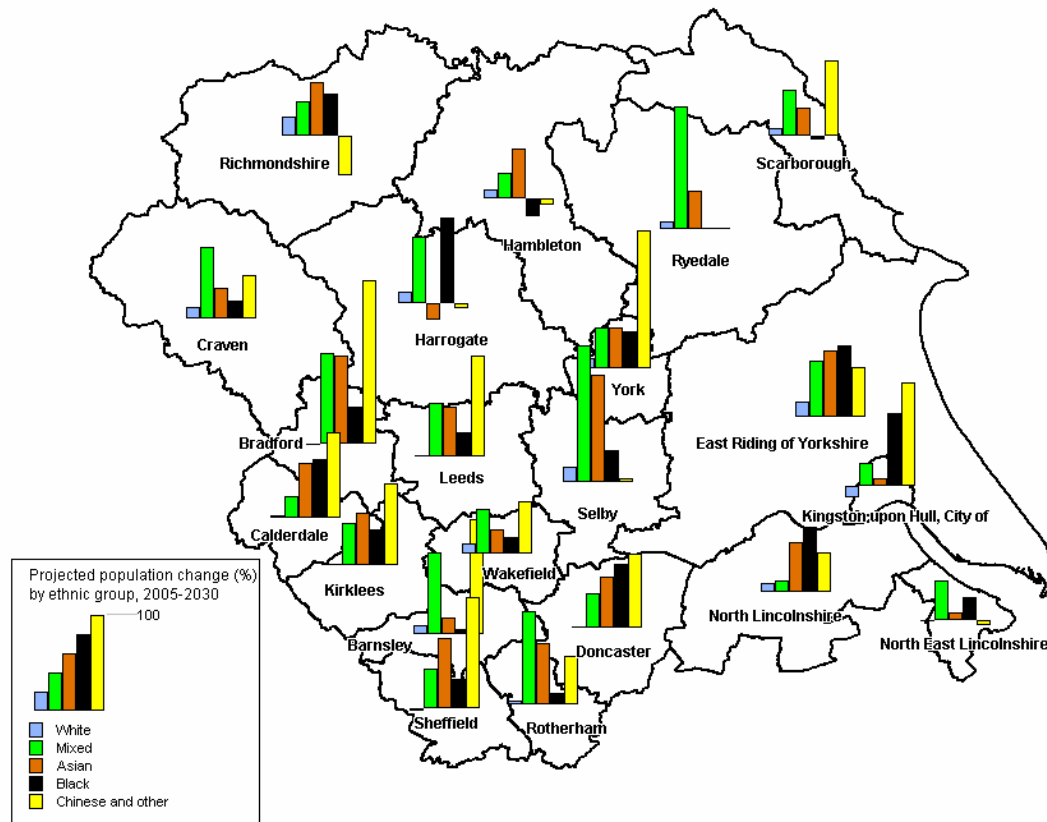
Table 3. North Yorkshire's Population by Ethnic Group (2005 and (estimated) 2030)⁴

	Hambleton	Harrogate	Ryedale	Selby	Scarborough	Richmondshire	Craven	North Yorkshire
White Ethnic Group Population 2005	83,900	151,360	51,379	76,170	105,038	49,182	52,888	522,317
<i>White Ethnic Group Population 2030 (estimated)</i>	<i>91,575</i>	<i>169,716</i>	<i>55,749</i>	<i>88,265</i>	<i>113,125</i>	<i>58,943</i>	<i>59,311</i>	<i>636,684</i>
<i>% Increase 2005 – 2030 (estimated)</i>	<i>9</i>	<i>12</i>	<i>9</i>	<i>16</i>	<i>8</i>	<i>20</i>	<i>12</i>	<i>22</i>
Mixed Ethnic Group Population 2005	409	1,374	315	414	616	410	406	3,944
<i>Mixed Ethnic Group Population 2030 (estimated)</i>	<i>519</i>	<i>2,314</i>	<i>714</i>	<i>998</i>	<i>911</i>	<i>558</i>	<i>707</i>	<i>6,721</i>
<i>% Change 2005 – 2030 (estimated)</i>	<i>27</i>	<i>68</i>	<i>127</i>	<i>141</i>	<i>48</i>	<i>36</i>	<i>74</i>	<i>70</i>
Black Ethnic Group Population 2005	194	853	N/A	202	203	100	205	1,757
<i>Black Ethnic Group Population 2030 (estimated)</i>	<i>157</i>	<i>1,606</i>	<i>N/A</i>	<i>269</i>	<i>194</i>	<i>143</i>	<i>242</i>	<i>2,611</i>
<i>% Change 2005 – 2030 (estimated)</i>	<i>-19</i>	<i>88</i>	<i>N/A</i>	<i>33</i>	<i>-4</i>	<i>43</i>	<i>18</i>	<i>49</i>
Chinese and Other Ethnic Group Population 2005	194	937	205	199	441	300	216	2,492
<i>Chinese and Other Ethnic Group Population 2030 (estimated)</i>	<i>180</i>	<i>882</i>	<i>208</i>	<i>207</i>	<i>784</i>	<i>178</i>	<i>312</i>	<i>2,751</i>
<i>% Change 2005 – 2030 (estimated)</i>	<i>-7</i>	<i>-6</i>	<i>1</i>	<i>4</i>	<i>78</i>	<i>-41</i>	<i>44</i>	<i>10</i>
Asian Ethnic Group Population 2005	403	977	201	614	702	708	985	4,590
<i>Asian Ethnic Group Population 2030 (estimated)</i>	<i>612</i>	<i>813</i>	<i>280</i>	<i>1,295</i>	<i>903</i>	<i>1,099</i>	<i>1,299</i>	<i>6,301</i>

⁴ SOURCE: University of Leeds, School of Geography: Ethnicity Project Model 2006: <http://www.yorkshirefutures.co.uk/siteassets/documents/YorkshireFutures/3/9/390F5D3F-E067-4872-8C5C-AB95E8F47FB7/Yorkshire%20&%20The%20Humber%20Population%20Projections.pdf>. Compilation and Analysis: NYCC Performance, Research and Intelligence Team.

<i>% Change 2005 - 2030 (estimated)</i>	52	-17	39	111	29	55	32	37
---	----	-----	----	-----	----	----	----	-----------

Figure 2. Projected Population Percentage Change for Ethnic Groups, Local Authorities in Yorkshire and The Humber, 2005-2030⁵



⁵ SOURCE: University of Leeds, School of Geography: Ethnicity Project Model 2006. <http://www.yorkshirefutures.co.uk/siteassets/documents/YorkshireFutures/3/9/390F5D3F-E067-4872-8C5C-AB95E8F47FB7/Yorkshire%20&%20The%20Humber%20Population%20Projections.pdf>

2.3.3 Notably, Table 3 and Figure 2 do not illustrate the size of the 'Eastern European Migrant' population Sub-Group. At the time of writing the Strategy, such intelligence was unavailable. Anecdotally however, it is known that in North Yorkshire, there are many migrants from Eastern Europe who are:

- Of working age
- Without children
- Contributors to the economy rather than service users
- Working predominantly in the catering and agriculture sectors

Such information is however only part helpful. More intelligence is required to understand how the public, private and voluntary sectors can best support and meet the needs of this Sub-Group of the County's population.

3.0 LIFESTYLES

3.1 UNHEALTHY LIFESTYLES

3.1.1 In comparison to the national picture fewer adults smoke and a greater proportion eat five or more portions of fresh fruit and vegetables a day. However the proportion of adults classified as obese (BMI ≥ 30) is above the national average.

3.1.2 The prevalence of binge drinking (consumption of 8 or more units of alcohol on the heaviest drinking day in the previous seven days; for women the cut-off was 6 or more units of alcohol) is also above the national average and North Yorkshire has a significantly higher rate of hospital in-patient stays related to alcohol misuse.

Table 4. Alcohol Related Deaths by Local Authority (Pooled) (2001 – 2003)⁶

	Persons	Males	Females
Local Authority	Rates per 100,000 population	Rates per 100,000 population	Rates per 100,000 population
Craven	3.5	5.2	*
Hambleton	5.4	6.2	4.6
Harrogate	7.4	11.1	4.1
Richmondshire	5.0	*	5.6
Ryedale	2.2	4.6	*
Scarborough	9.6	14.3	5.4
Selby	6.3	5.9	6.8
North Yorkshire	5.6	6.8	3.8

* Fewer than 5 deaths

Alcohol misuse can lead to alcohol related deaths. Across the County, between 2001 – 2003:

- More people in Scarborough District had alcohol related deaths than in any other District of the County. The rate of alcohol related deaths was also high (above the County average) in Harrogate and Selby Districts.
- Across the County, on average, more men than women had alcohol related deaths.
- More men in Scarborough and Harrogate Districts had alcohol related deaths than in any other District of the County. Of all Districts in the County, Ryedale had the smallest number of men having alcohol related deaths.
- More women in Selby had alcohol related deaths than in any other District of the County. In order of falling numbers, Richmondshire, Scarborough, Hambleton and Harrogate districts also had above County average rates of women having alcohol related deaths.

⁶ SOURCE: Office for National Statistics (ONS)

4.0 EDUCATION

4.1 Tables 5 – 11 below illustrate educational activity across North Yorkshire, at District Authority area level, in comparison with the region and England.

Table 5. Educational Achievement across North Yorkshire at Key Stages 2 and 3 in Comparison with the Region and England (2006)⁷

	Hambleton	Harrogate	Ryedale	Selby	Scarborough	Richmondshire	Craven	North Yorkshire	Yorkshire and The Humber	England
Key Stage 2 Results: Percentage of Pupils achieving Level 4 or above - ENGLISH	82	86	83	81	77	78	86	82	77	79
Key Stage 2 Results: Percentage of Pupils achieving Level 4 or above - MATHS	79	82	81	83	75	75	85	80	74	76
Key Stage 3 Results: Percentage of Pupils achieving Level 5 or above - ENGLISH	78	84	77	80	71	76	87	79	69	73
Key Stage 3 Results:	83	86	83	84	76	80	87	83	75	77

⁷ SOURCE: DFES

Percentage of Pupils achieving Level 5 or above - MATHS										
---	--	--	--	--	--	--	--	--	--	--

Table 5 above illustrates the following.

At Key Stage 2:

- The percentage of pupils achieving level 4 or above in English was highest in the Harrogate and Craven District Authority areas of the County and lowest in the Scarborough District Authority area.
- Overall, educational achievement in this regard is either equal to or above the regional and national average in five (Hambleton, Harrogate, Ryedale, Selby and Craven) of the seven District Authority areas.
- The percentage of pupils achieving level 4 or above in Maths was highest in the Craven District Authority area of the County and equally lowest in the Scarborough and Richmondshire District Authority areas.
- Overall, educational achievement in this regard is above the regional and national average in five (Hambleton, Harrogate, Ryedale, Selby and Craven) of the seven District Authority areas.

At Key Stage 3:

- The percentage of pupils achieving level 5 or above in English was highest in the Craven District Authority area of the County and lowest in the Scarborough District Authority area.
- Overall, educational achievement in this regard is above the regional and national average in six (Hambleton, Harrogate, Richmondshire, Ryedale, Selby and Craven) of the seven District Authority areas of the County.
- The percentage of pupils achieving level 5 or above in Maths was highest in the Craven District Authority area of the County and lowest in the Scarborough District Authority area.
- Overall, educational achievement in this regard is above the regional and national average in six (Hambleton, Harrogate, Richmondshire, Ryedale, Selby and Craven) of the seven District Authority areas of the County.

Table 6. Educational Achievement across North Yorkshire at GCSE Level in Comparison with the Region and England (2006)⁸

	Hambleton	Harrogate	Ryedale	Selby	Scarborough	Richmondshire	Craven	North Yorkshire	Yorkshire and The Humber	England
GCSE and equivalent results, percentage of pupils achieving 5+ A*-G	69	73	62	61	56	56	65	64	55	59
GCSE and equivalent results, percentage of pupils achieving 5+ A*-C	96	95	95	94	89	94	94	94	89	91

4.3 Table 6 above shows that:

- The percentage of pupils achieving 5+ GCSEs / equivalent qualifications at grades A* - G was highest in the Harrogate District Authority area of the County and equally lowest in the Scarborough and Richmondshire District Authority areas.
- Overall, the percentage of pupils achieving 5+ GCSEs / equivalent qualifications at grades A* - G is above the regional and national average in all District Authority areas of the County.
- The percentage of pupils achieving 5+ GCSEs / equivalent qualifications at grades A* - C was highest in the Hambleton District Authority area of the County and lowest in the Scarborough District Authority area.
- Overall, the percentage of pupils achieving 5+ GCSEs / equivalent qualifications at grades A* - C is either equal to or above the regional and national average in all District Authority areas of the County.

⁸ SOURCE: DFES

Table 7. Number of Specialist Schools across North Yorkshire in Comparison with the Region and England (2007)⁹

	Hambleton	Harrogate	Ryedale	Selby	Scarborough	Richmondshire	Craven	North Yorkshire	Yorkshire and The Humber	England
Number of Specialist Schools	6	10	4	6	6	3	7	42	273	2,799

4.4 Table 7 above shows that, in 2007, each District Authority area of the County had a specialist school and that the highest number of such schools was in Harrogate, then Craven and then, equally, in Hambleton, Selby and Scarborough.

Table 8. Higher Education Attendance across North Yorkshire in Comparison with the Region and England (2005/06)¹⁰

	Hambleton	Harrogate	Ryedale	Selby	Scarborough	Richmondshire	Craven	North Yorkshire	Yorkshire and The Humber	England
Higher Education Institutions - Full time Entrants aged 18 to 20	470	900	210	370	420	220	290	2,880	20,175	235,160
Higher Education Institutions - Part time Entrants aged 18 to 20	20	30	5	15	25	15	5	105	595	7,085

4.5 Table 8 above shows that, in 2005/06:

⁹ SOURCE: DFES

¹⁰ SOURCE: DFES

- There were more full time entrants to Higher Education aged 18 – 20 in the Harrogate District Authority area than any other District Authority area of the County (equal to over 31% of all such students in North Yorkshire at that time) and that the lowest number of such students was from the Ryedale District Authority area of the County.
- There were more part time entrants to Higher Education aged 18 – 20 in the Harrogate District Authority area than any other District Authority area of the County (equal to almost 29% of all such students in North Yorkshire at that time) and that the equally lowest numbers of such students were from the Craven and Ryedale District Authority areas of the County.

Table 9. Qualifications of the Working Age Population across North Yorkshire in Comparison with the Region and England (2005/06)¹¹

	Hambleton	Harrogate	Ryedale	Selby	Scarborough	Richmondshire	Craven	North Yorkshire	Yorkshire and The Humber	England
Percentage of People of Working Age Qualified to at least Level 2	75	74	70	62	62	67	72	69	65	67
Percentage of People of Working Age Qualified to Level 4 and above	29	32	29	23	21	17	26	26	23	27

4.5 Table 9 above shows that, in 2005/06:

- The Hambleton District Authority area was home to the highest percentage of people of working age qualified

¹¹ SOURCE: DfES

to at least Level 2¹² in the County. Both Selby and Scarborough District Authority areas were home to the lowest percentage of such people in the County.

- Overall, each District Authority area of the County was home to either the same, or a higher, percentage of people of working age qualified to at least Level 2 than in the region and England.
- The Harrogate District Authority area was home to the highest percentage of people of working age qualified to at least Level 4¹³ in the County. Richmondshire District Authority area was home to the lowest percentage of such people in the County.

Overall, five (Hambleton, Harrogate, Ryedale, Selby and Craven) of the seven District Authority areas of the County was home to either the same, or a higher, percentage of people of working age qualified to at least Level 4 than in the region and England.

4.6 Considering now GCE/VCE A Level attainment in North Yorkshire, Table 10 below shows that, in 2004/05:

- The Harrogate District Authority area was home to more 16 – 18 year old GCE/VCE A Level students (29% of the entire County's population of such people) than any other District Authority area of the County and Ryedale District Authority area was home to the lowest number (7% of the entire County's population) of such students.
- The Hambleton District Authority area was home to the highest percentage of 16 – 18 year old students achieving 2 or more passes at GCE/VCE A Level in the County and Scarborough District Authority area was home to the lowest percentage of such students.
- Overall, across the County in 2004/05, the percentage of 16 – 18 year old students achieving 2 or more passes at GCE/VCE A Level was either the same as, or higher than the national and regional average in six (Hambleton, Harrogate, Richmondshire, Ryedale, Selby and Craven) of the seven District Authority areas of the County.
- The Craven District Authority area was home to the highest percentage of 16 – 18 year old students achieving 3 or more passes at GCE/VCE A Level in the County and Scarborough and Selby District Authority areas were home to the equally lowest percentage of such students.
- Overall, across the County in 2004/05, the percentage of 16 – 18 year old students achieving 3 or more passes

¹² Level 2 of the National Qualifications Framework is comprised of: BTEC First Diplomas and Certificates; BTEC Diplomas, Certificate and Awards; and GCSEs grades A* - C.

¹³ Level 4 of the National Qualifications Framework is comprised of: BTEC Professional Diplomas, Certificates and Awards

at GCE/VCE A Level was higher than the national and regional average in five (Hambleton, Harrogate, Ryedale, Richmondshire and Craven) of the seven District Authority areas of the County.

Table 10. GCE/VCE A Level Attainment across North Yorkshire in Comparison with the Region and England (2004/05)¹⁴

	Hambleton	Harrogate	Ryedale	Selby	Scarborough	Richmondshire	Craven	North Yorkshire	Yorkshire and The Humber	England
16-18 Year Old GCE/VCE A Level Students; Total; (Referenced by Student Residence) (no. people)	479	848	200	394	430	227	299	2,877	21,289	229,787
Students Achieving 2 or More GCE/VCE A Level or Equivalent Passes; (Referenced by Student Residence) (% people)	98	97	97	94	90	93	97	95	93	93
Students Achieving 3 or More A Grades at GCE/VCE A Level; (Referenced by Student Residence) (% people)	8	12	10	6	6	8	17	10	7	7

¹⁴ SOURCE: DfES

Table 11. School Absenteeism across North Yorkshire in Comparison with the Region and England (2004/05)¹⁵

	Hambleton	Harrogate	Ryedale	Selby	Scarborough	Richmondshire	Craven	North Yorkshire	Yorkshire and The Humber	England
Overall Absence in All Schools (% pupil half days)	6	5	6	6	7	6	5	6	7	7
Unauthorised Absence in All Schools (% half days)	0	0	0	1	0	1	0	0	1	1

4.7 Table 11 above shows that, in 2004/05:

- The Scarborough District Authority area experienced the highest percentage of overall half day pupil absences in all schools than any other District Authority area of the County. Craven and Harrogate District Authority areas experienced the equally lowest percentage of half day pupil absences in all schools.
- Overall, the percentage of overall half day pupil absences in all schools across the County was below the regional and national average in six (Hambleton, Harrogate, Ryedale, Selby, Richmondshire and Craven) of the seven District Authority areas of the County.
- The Scarborough and Richmondshire District Authority areas experienced the highest percentage of unauthorised half day pupil absences in all schools than any other District Authority area of the County.
- Overall, the percentage of unauthorised half day pupil absences in all schools across the County was below the regional and national average in five (Hambleton, Harrogate, Ryedale, Richmondshire and Craven) of the seven District Authority areas of the County.

¹⁵ SOURCE: DFES

5.0 ECONOMY

5.1 Tables 12 – 20 below illustrate the composition and structure of the North Yorkshire economy in comparison with the region and England on average.

Table 12. Percentage Levels of the Working Age Population in North Yorkshire (2006)¹⁶

	Hambleton	Harrogate	Ryedale	Selby	Scarborough	Richmondshire	Craven	North Yorkshire	Yorkshire and The Humber	England
Working age population % (all)	59	61	58	62	58	63	58	60	62	62
Working age population % (males)	64	66	62	66	62	67	63	64	66	66
Working age population % (females)	55	56	54	59	54	58	53	55	58	59

5.2 Table 12 shows that:

- The largest working age population in the County, by District Authority area, is in Richmondshire and the joint smallest are in Craven and Ryedale District Authority areas. Overall, the County has below average regional and national working age populations and only two (Selby and Richmondshire) of the seven District Authority areas in the County have a working age population which is equal to, or higher than, the regional and national levels of the same.
- The largest male working age population in the County, by District Authority area, is in Richmondshire and the joint smallest is in Craven and Ryedale. Overall, the proportion of the total male population in the County which is of working age is below the regional and national average levels of the same and only three (Harrogate, Selby and Richmondshire) of the seven District Authority areas in the County have a

¹⁶ SOURCE: ONS Mid Year Population Estimates (NOMIS)

total male working age population which is equal to, or higher than, the regional and national levels of the same.

- The largest female working age population in the County, by District Authority area, is in Selby and the joint smallest is in Craven. Overall, the proportion of the total female population in the County which is of working age is below the regional and national average levels of the same and only two (Selby and Richmondshire) of the seven District Authority areas in the County have a total female working age population which is equal to, or higher than, the regional and national levels of the same.

Table 13. Percentage Levels of Economic Activity in North Yorkshire (2006)¹⁷

	Hambleton	Harrogate	Ryedale	Selby	Scarborough	Richmondshire	Craven	North Yorkshire	Yorkshire and The Humber	England
Economically active (ALL)	81	82	79	77	77	85	85	81	78	79
Economically active (males)	86	84	91	87	82	94	91	88	83	83
Economically active (females)	77	80	64	65	71	76	79	73	73	74
Economically active (ALL in employment)	78	81	75	71	72	85	82	77	74	74
Economically active (males in employment)	81	82	84	81	74	92	87	83	78	79
Economically active (females in employment)	75	79	64	60	70	76	77	72	69	70
Economically active (ALL employees)	69	71	61	63	62	67	60	65	65	65
Economically active (males employees)	67	68	65	70	60	61	56	64	66	65
Economically active (females employees)	71	73	57	56	64	74	65	66	65	64
Economically active (ALL self employed)	9	9	13	8	10	17	21	12	8	9
Economically active (males self employed)	15	13	*	11	14	31	31	16	12	13
Economically active (females self employed)	*	*	*	*	*	*	*	0	4	5

* Data not available

¹⁷ SOURCE: ONS Mid Year Population Estimates (NOMIS)

5.2 Table 13 above identifies that:

- Economic activity is highest, and above national and regional average, in the Richmondshire and Craven District Authority areas of the County. 91% of males in both the Ryedale and Craven District Authority areas of the County are economically active. This is more than there is in each of the other District Authority areas of the County, the County as a whole, the region and England on average. 80% of females in the Harrogate District Authority area of the County are economically active. This is more than there is in each of the other District Authority areas of the County, the County as a whole, the region and England on average.
- 85% of all people in the Richmondshire District Authority area are in employment. This is more than in each of the other Districts of the County, the County as a whole, the region and England on average. In addition, more men in the Richmondshire District Authority area are in employment than in each of the other Districts of the County, the County as a whole, the region and England on average. Also, more women in the Harrogate District Authority area are in employment than in each of the other Districts of the County, the County as a whole, the region and England on average.
- Most economically active people in the County are employees and there are more employees in the Harrogate District Authority area than in each of the other District Authority areas of the County, the region and England on average. The smallest number of employees in the County can be found in the Craven District Authority area. In addition, more men in the Selby District Authority area are employees than in each of the other Districts of the County, the County as a whole, the region and England on average. Also, more women in the Richmondshire District Authority area are employees than in each of the other Districts of the County, the County as a whole, the region and England on average.
- Self employment levels for all economically active people across all District Authority areas of the County are above regional and national averages for the same. Indeed, the Craven District Authority area is home to 12% more self employed economically active people than England on average and 13% more than the region on average.
- Self employment levels for economically active males across all District Authority areas of the County are above regional and national average levels. Rather notably, the Richmondshire and Craven District Authority areas are, respectively, home to 19% more self employed economically active males than the region and 18%

more than England on average¹⁸.

Table 14. Percentage Levels of Economic Inactivity in North Yorkshire (2006)¹⁹

	Hambleton	Harrogate	Ryedale	Selby	Scarborough	Richmondshire	Craven	North Yorkshire	Yorkshire and The Humber	England
Economically inactive (ALL)	19	18	21	23	23	15	15	19	22	21
Economically inactive (male)	15	16	*	13	17	*	*	9	17	17
Economically inactive (female)	23	20	36	35	29	24	*	24	27	27
Economically inactive (ALL) wanting a job)	*	*	*	*	6	*	*	1	6	5
Economically inactive ((male) wanting a job)	*	*	*	*	*	*	*	0	5	4
Economically inactive ((female) wanting a job)	*	*	*	*	*	*	*	0	7	7
Economically inactive ((ALL) not wanting a job)	16	16	18	20	17	11	*	14	16	16
Economically inactive ((male) not wanting a job)	15	15	*	13	12	*	*	8	12	12
Economically inactive ((female) not wanting a job)	17	18	28	28	22	*	*	16	20	20

* Data not available.

5.3 Rates of economic inactivity for all people are highest (and, above the regional and national average) in the Selby and Scarborough District Authority areas of the County. They are lowest for all people in the Craven and Richmondshire District Authority areas. For males specifically, the rate of economic inactivity is highest in Scarborough and for females it is highest in Selby.

The rate of economic inactivity is comprised of those wanting work and not wanting work. According to the data available, most people who are economically inactive and wanting work live in the Scarborough District. The data is

¹⁸ Anecdotally, it has been suggested that the majority of the male self employed population in these two District Authority areas works in agriculture and related service areas.

¹⁹ SOURCE: ONS Annual Population Survey 2006 (NOMIS)

however not broken down into male and female categories of information.

Finally in this regard, most people who are economically inactive and not wanting to work live in Selby. There are more males who are economically inactive and not wanting work in the Hambleton and Harrogate District Authority areas than in any other District of the County, the region and England as a whole on average. There are more economically inactive females not wanting work in the Ryedale and Selby District Authority areas than elsewhere in the County, the region and England on average.

Table 15. Percentage Levels of Employment by Occupation in North Yorkshire (2006)²⁰

	Hambleton	Harrogate	Ryedale	Selby	Scarborough	Richmondshire	Craven	North Yorkshire	Yorkshire and The Humber	England
Employment by occupation (2006) - managers and senior officials	9	23	12	13	12	13	19	14	13	15
Employment by occupation (2006) - professional occupations	15	15	*	19	*	*	*	7	11	13
Employment by occupation (2006) - associate professional and technical	9	10	*	10	11	19	*	8	13	14
Employment by occupation (2006) - administrative and secretarial	13	12	*	*	9	14	*	7	11	12
Employment by occupation (2006) - skilled trades occupations	12	7	15	17	15	18	17	15	12	11
Employment by occupation (2006) - personal service occupations	12	14	*	10	11	*	*	7	8	8
Employment by occupation (2006) - sales and customer service occupations	*	6	*	8	11	*	*	4	8	8
Employment by occupation (2006) - process plant and machine operatives	9	6	16	8	8	*	*	7	9	7
Employment by occupation (2006) - elementary occupations	15	8	14	9	19	*	15	11	13	11

5.6 Considering Table 15 above, employment across North Yorkshire as a whole is concentrated primarily around the following occupations:

- Skilled trade occupations (employing 15% of the County's total economically active population, equal to 1%

²⁰ SOURCE: ONS Annual Population Survey 2006 (NOMIS)

- more than the regional average for this occupation)
- Managers and senior officials (employing 14% of the County's total economically active population, equal to 3% more than the regional average and 4% more than the national average for this occupation)

At individual District Authority level however, the picture is rather mixed:

- In Hambleton, the majority of the economically active population is employed in either professional (15%), or elementary occupations (15%).
- In Harrogate, the vast majority of the economically active population is employed as managers and senior officials (23%).
- In Ryedale, the majority of the economically active population is employed as either process plant and machine operatives (16%), or in skilled trades' occupations (15%).
- In Selby, the majority of the economically active population is employed in either professional occupations (19%), or skilled trades' occupations (17%).
- In Scarborough, the majority of the economically active population is employed in elementary occupations (19%).
- In Richmondshire, the majority of the economically active population is employed in either associate professional or technical positions (19%), or in skilled trade occupations (18%).
- In Craven, the majority of the economically active population is employed as managers and senior officials (19%), in skilled trade occupations (17%), or in elementary occupations (15%).

Table 16. Percentage Levels of Qualifications in North Yorkshire (2006)²¹

	Hambleton	Harrogate	Ryedale	Selby	Scarborough	Richmondshire	Craven	North Yorkshire	Yorkshire and The Humber	England
Qualifications (2006) NVQ4 and above	29	32	29	23	21	17	26	25	23	27
Qualifications (2006) NVQ3 and above	50	52	46	36	38	42	50	45	41	45
Qualifications (2006) NVQ2 and above	72	71	67	60	60	62	69	66	61	64
Qualifications (2006) NVQ1 and above	82	84	83	78	78	79	78	80	76	78
Other qualifications (2006)	7	6		*	*	11	*	3	8	9
No qualifications (2006)	10	11	*	20	19	*	16	11	15	14

*No data available

Regarding qualifications:

- Selby and Scarborough District Authority areas are home to the majority of people with no qualifications.
- Harrogate District Authority area is home to the majority of people with qualifications at NVQ Level 1 and above; NVQ Level 3 and above; and, NVQ Level 4 and above.
- Hambleton District Authority area is home to the majority of people with qualifications at NVQ Level 2 and above.

²¹ SOURCE: ONS Annual Population Survey 2006 (NOMIS)

Table 17. Earnings in North Yorkshire (2006)²²

	Hambleton	Harrogate	Ryedale	Selby	Scarborough	Richmondshire	Craven	North Yorkshire	Yorkshire and The Humber	England
Earnings by residence (£) - gross weekly pay - full time workers (2006)	427	476	380	458	356	398	392	412	415	450
Earnings by residence (£) - gross weekly pay - male full time workers (2006)	472	494	409	492	424	513	469	468	457	491
Earnings by residence (£) - gross weekly pay - female full time workers (2006)	353	438	293	387	292	335	*	300	354	388
Earnings by residence (£) - hourly pay - full time workers (2006)	11	12	9	11	9	10	10	10	10	11
Earnings by residence (£) - hourly pay - male full time workers (2006)	11	12	11	12	10	13	*	10	11	12
Earnings by residence (£) - hourly pay - female full time workers (2006)	9	11	7	10	8	9	*	8	9	10

* Data not available

5.7 On a residence by residence basis, the gross weekly pay for full time work in North Yorkshire varies widely in relation to gender and location. For all people working full time it ranges between £356 (Scarborough) and £476 (Harrogate). For male full time workers, it varies between £409 (Ryedale) and £513 (Richmondshire). For female full time workers, it varies between £292 (Scarborough) and £438 (Harrogate). Overall, the gross weekly pay for all full time workers in the County is less than the regional and national averages; for male full time workers, it is above the regional average and below the national average; and, for female full time workers, it is less than the regional and national averages.

Also on a residence by residence basis, unsurprisingly, the hourly pay for all people working full time also varies in relation to gender and location. For all people working full time, it ranges between £9 (Ryedale and Scarborough) and £12 per hour (Harrogate). For male full time workers, it varies between £10 (Scarborough) and £13 (Richmondshire). For female full time workers, it varies between £7 (Ryedale) and £11 (Harrogate).

²² SOURCE: ONS Annual Survey of Hours and Earnings 2006 (NOMIS)

Table 18. Percentage Levels of Benefit Claimants (Rates and Proportions) in North Yorkshire (2007)²³

	Hambleton	Harrogate	Ryedale	Selby	Scarborough	Richmondshire	Craven	North Yorkshire	Yorkshire and The Humber	England
Total JSA claimants - ALL (%)	1	1	1	1	3	1	1	1	2	2
Total JSA claimants - male (%)	1	1	1	2	4	1	1	2	3	3
Total JSA claimants - female (%)	1	1	1	1	1	1	1	1	1	1
JSA claimants by age - 18 - 24 years (%)	34	24	25	30	26	33	32	29	32	31
JSA claimants by age - 25 - 49 years (%)	48	57	49	51	52	48	44	50	52	52
JSA claimants by age - 50 + years (%)	18	19	25	18	21	18	24	20	15	16
JSA claimants by duration of claim - up to 6 months (%)	77	72	72	73	70	86	77	75	69	67
JSA claimants by duration of claim - over 6 and up to 12 months (%)	13	16	12	15	15	8	13	13	17	17
JSA claimants by duration of claim - over 12 months (%)	11	13	16	12	16	7	9	12	14	16
Key Benefit Claimants - TOTAL CLAIMANTS (%)	8	8	8	10	17	7	9	10	15	15
Key Benefit Claimants - Job Seekers (%)	1	1	1	2	3	1	1	2	3	3
Key Benefit Claimants - Incapacity Benefits (%)	4	4	4	5	8	3	5	5	7	7
Key Benefit Claimants - Lone Parents (%)	1	1	1	1	2	1	1	1	2	2
Key Benefit Claimants - Carers (%)	1	1	1	1	1	1	1	1	1	1
Key Benefit Claimants - Others on income related benefits (%)	0	0	0	0	1	0	0	0	1	0
Key Benefit Claimants - Disabled (%)	1	1	1	1	1	1	1	1	1	1
Key Benefit Claimants - Bereaved (%)	0	0	0	0	0	0	0	0	0	0

²³ SOURCE: DWP Benefit Claimants – Working Age Client Group (NOMIS)

5.8 The percentage of the population which is claiming Job Seekers Allowance (JSA) varies according to age and location.

- More males in Scarborough claim JSA than other males or females in other District Authority areas of the County and across the region and England on average.
- More 18 – 24 year olds in Hambleton claim JSA than in any other District Authority area of the County and across the region and England on average. The majority of JSA claimants in Hambleton are however aged between 25 – 49.
- More 25 – 49 year olds in Harrogate claim JSA than in any other District Authority area of the County and across the region and England on average. This age group is the majority of JSA claimants in the District too.
- More people aged 50+ are JSA claimants in Ryedale than in any other District Authority area of the County and across the region and England on average. The majority of JSA claimants in Ryedale are however aged between 25 – 49.

5.9 The length of time that individuals are claimants of JSA also varies according to location.

- Positively, overall, the percentage of people in North Yorkshire claiming JSA for up to 6 months is higher than the regional and national average. The majority of all people in the County who claim JSA for up to 6 months and, of those who claim JSA for up to 6 months, live in the Richmondshire District Authority area.
- Of those claiming JSA for over 6 and up to 12 months, the majority live in Harrogate and the minority live in Richmondshire. Overall, the percentage of people in North Yorkshire that claim JSA for over 6 and up to 12 months is lower than both the regional and national averages.
- Considering those people in the County who claimed JSA for over 12 months, the majority live, respectively, in Ryedale and Scarborough and the minority live in Richmondshire. Overall, the percentage of people in North Yorkshire that claim JSA for over 12 months is lower than both the regional and national averages.

- 5.10 With regard to Key Benefit Claimants, the situation also varies across the County with Scarborough District Authority area being home to the majority of all people claiming Key Benefits (namely: JSA; Incapacity Benefit; Lone Parents; Carers; income related benefits; disabled; and, bereaved) in the County. The majority of people in North Yorkshire who claim any Key Benefits are resident in Scarborough. The proportion of people claiming any Key Benefits in Scarborough is either equal to or above the regional and national averages.
- 5.11 Considering now employment by type in the County, across the County as a whole, there are more occupied full time jobs than there are occupied part time jobs. There are however fewer full time (and, consequently, more part time) jobs across the County than there are regionally or nationally on average. The situation does however vary at individual District level. For example, Ryedale has the largest proportion (72% full time, 28% part time) and Scarborough the smallest proportion (56% full time, 44% part time) of full time: part time jobs.

The sectors which provide employment opportunities in the County also varies on a District by District basis.

- The majority (and, more than the regional and national average) of **manufacturing** jobs are in Selby and the minority are in Richmondshire.
- The majority (and, more than the regional and national average) of **construction** jobs are in Richmondshire and the minority are in Scarborough.
- The majority (and, more than the regional and national average) of **all service** jobs are in Harrogate and the minority are in Selby.
- The majority (and, more than the regional and national average) of **distribution, hotel and restaurant** jobs are in Scarborough and the minority are in Ryedale.
- The majority (and, more than the regional and national average) of **transport and communication service** jobs are in Ryedale and the minority are in Scarborough.
- The majority (and, more than the regional and national average) of **finance, IT and other business service** jobs are in Craven and the minority are in Scarborough.
- The majority (and, more than the regional and national average) of **public administration, education and health service** jobs are in Hambleton and the minority are in Ryedale.
- The majority (and, more than the regional and national average) of **'other' service** jobs are in Richmondshire and the minority are in Selby.
- The majority (and, more than the regional and national average) of **tourism related jobs** are in Scarborough

and the minority are in Selby. There are also more tourism related jobs in each District of the County than there are regionally and nationally on average.

Table 19. Employment by Type in North Yorkshire (2005)²⁴

	Hambleton	Harrogate	Ryedale	Selby	Scarborough	Richmondshire	Craven	North Yorkshire	Yorkshire and The Humber	England
Employee jobs - TOTAL	41,800	*	27,300	29,400	40,700	15,000	25,700	179,900	*	*
Employee jobs - Full Time (%)	60	61	72	71	56	59	60	63	66	68
Employee jobs - Part Time (%)	40	39	28	29	44	41	40	37	34	32
Employee jobs - MANUFACTURING (%)	10	10	19	20	12	7	12	13	14	11
Employee jobs - CONSTRUCTION (%)	6	4	6	5	4	8	6	6	5	5
Employee jobs - SERVICES TOTAL (%)	80	84	71	64	82	80	79	77	80	83
Employee jobs - DISTRIBUTION, HOTELS + RESTAURANT SERVICES (%)	22	31	18	21	36	34	29	27	24	24
Employee jobs - TRANSPORT + COMMUNICATION SERVICES (%)	4	3	19	9	3	4	3	7	6	6
Employee jobs - finance, IT + other business SERVICES (%)	11	20	10	12	9	9	23	13	17	21
Employee jobs - PUBLIC ADMIN, EDUCATION + HEALTH SERVICES (%)	38	25	17	19	30	25	21	25	28	27
Employee jobs - OTHER SERVICES (%)	4	5	6	3	5	7	3	5	5	5
Employee jobs - TOURISM RELATED	9	13	12	8	20	19	14	14	8	8

²⁴ SOURCE: ONS Annual Business Inquiry 2005 (NOMIS)

(%)										
-----	--	--	--	--	--	--	--	--	--	--

* Data not available

Table 20. VAT Registrations and Deregistrations in North Yorkshire (2005)²⁵

	Hambleton	Harrogate	Ryedale	Selby	Scarborough	Richmondshire	Craven	North Yorkshire	Yorkshire and The Humber	England
VAT Registrations (%)	6	9	7	9	7	7	7	7	10	10
VAT Deregistrations (%)	6	7	6	8	8	6	6	7	8	8
VAT end of year stock (number of enterprises)	4,265	6,965	3,100	2,780	3,340	2,175	2,950	25,575	*	*

* Data not available

5.12 VAT registrations and deregistrations are an effective and official guide to the pattern of business start ups and closures. They are an indicator of the level of entrepreneurship and of the health of the business population²⁶.

Overall, there were fewer VAT registrations across the County than there were regionally or nationally in 2005. Within the County however, there was notable variation on a District by District basis.

- Harrogate and Selby District Authority areas had above County average percentages of VAT registrations.
- Hambleton had a below County average percentages of VAT registrations.

Positively, there were overall, fewer VAT deregistrations across the County than there were regionally or nationally in 2005. Again however, there was notable variation between individual District Authority areas in the County.

²⁵ SOURCE: DTI Small Business Service - VAT Registrations/Deregistrations by Industry (2005)(NOMIS)

²⁶ VAT registration data is widely used in regional and local economic planning. It should be noted however that these figures do not reveal the complete picture in terms of business activity in a location. Some VAT exempt sectors and businesses operating below the VAT registration threshold are not covered. At the start of 2005, the threshold for VAT registrations was an annual turnover of £58,000. In total, at that time, only 1.8 million of the estimated 4.3 million enterprises in the UK were VAT registered. It should also be noted that some businesses voluntarily register for VAT even though their annual turnover is below the threshold. In 2005, data reflects that around 20% of all VAT registrations have turnover below the VAT threshold.

- Selby and Scarborough District Authority areas had above County average percentages of VAT deregistrations.
- Hambleton; Ryedale; Richmondshire; and, Craven District Authority areas had below County average percentages of VAT deregistrations.
- Harrogate District Authority area experienced the same percentage VAT deregistrations as the County on average.

Finally in this regard, the overall number of VAT registered business in the County also varied substantially on a District by District basis.

- Harrogate District Authority area provides the business base for 27% of all VAT registered businesses in the County.
- Hambleton District Authority area provides the business base for 17% of all VAT registered businesses in the County.
- Scarborough District Authority area provides the business base for 13% of all VAT registered businesses in the County.
- Selby District Authority area provides the business base for 11% of all VAT registered businesses in the County.
- The predominantly rural District Authority areas of the County (using the DEFRA 'Rurality Definition', namely: Richmondshire, Ryedale and Craven), by contrast, together provide the business base for only 32% of all VAT registered businesses in the County.

6.0 TRANSPORT

6.1 INFRASTRUCTURE AND SERVICES

6.1.1 North Yorkshire is generally well served by transport links. At July 2005, there was 153 km of trunk road in the County. This included:

- the A1, providing an important north-south route through the County
- the A168/A19 linking the A1 to Teesside
- the A64 linking Leeds and the A1 to the east coast of Scarborough
- the A66 Trans Pennine route
- the A629/A65 linking West Yorkshire to Cumbria and a short section of the M62 in the south of the County

6.1.2 The County Council is the Highway and Transport Authority for all non trunk roads in the County. It is currently responsible for:

- approximately 783km of principal roads
- 8,246km of non principal roads
- 1,959 highway bridges
- Over 10,000km of public rights of way network

In addition:

- Annually, approximately 17.6 million km of commercial and 4.4 million km of contracted bus services use the highways network. There are nine main bus stations and over 5,000 bus stops.
- There are 46 railway stations and 418km of rail routes serving the County. Rail routes include the East Coast Main Line and the Tran-Pennine route.
- There are three international airports (namely, Leeds/Bradford; Durham/Tees Valley; and, Robin Hood Airport Doncaster Sheffield) serving, but not located in, the County. Manchester Airport is also well used by those able to access it.

6.2 MOTOR VEHICLE USE

6.2.1 Despite this apparently substantial transport network in / serving the County, because of the dispersed settlement pattern in the County, citizens and communities in North Yorkshire often experience difficulties travelling within and beyond the County if they do not have access to a car, van, public transport or taxis.

6.2.2 Table 21 below shows levels of vehicle ownership across the County are highest in urban areas and lowest (on a household by household basis) in rural areas.

- In 2001, there were more households without a car or van in the urban Scarborough District Authority area than in any other District Authority area of the County, the county as a whole, the region and also the country on average. Overall, however, the percentage of households without a car or van in each District Authority area of the County is, below the regional and national average.
- Also in 2001, the urban Harrogate District Authority area had a higher number of households with one, two, three

or four cars or vans than any other District Authority area of the county.

- At the same time, Richmondshire District Authority was home to a higher percentage of households with one car or van than any other District Authority area of the County, the County, the region and the country on average.
- Hambleton had the highest percentage of households with two or more vans. Again, this percentage was higher than the county, the region and the country on average. It also had the highest percentage of households with three or more vans. At 7%, this was, again, a higher percentage than in any other District Authority area of the County, the County, the region and the country on average.

Table 21. Vehicle Ownership across North Yorkshire (2001)

	Hambleton	Harrogate	Ryedale	Selby	Richmondshire	Sacroborough	Craven	North Yorkshire	Yorkshire and The Humber	England
All Households (No.)	34,688	63,077	21,451	30,836	18,125	46,726	22,680	237,583	2,064,748	20,451,427
Households with no cars or vans (No.)	4,867	11,197	3,685	5,381	2,650	14,323	4,295	46,398	625,896	5,488,386
Households with no cars or vans (%)	14	18	17	17	15	31	19	19	30	27
Households with one car or van (No.)	15,279	27,739	9,998	13,307	8,923	22,167	10,625	108,038	911,246	8,935,718
Households with one car or van (%)	44	44	47	43	49	47	47	46	44	44
Households with two cars or vans (No.)	11,274	19,396	6,138	9,736	5,260	8,333	6,187	66,324	433,671	4,818,581
Households with two cars or vans (%)	33	31	29	32	29	18	27	28	21	24
Households with three cars or vans (No.)	2,467	3,619	1,231	1,878	1,026	1,449	1,191	12,861	73,202	924,289
Households with three cars or vans (%)	7	6	6	6	6	3	5	6	4	5
Households with four or more cars or vans (No.)	801	1,126	399	534	266	454	382	3,962	20,733	284,453
Households with four or more cars or vans (%)	2	2	2	2	1	1	2	2	1	1

All cars or vans in the area (No.)	48,803	82,399	27,754	40,808	23,712	45,228	28,285	296,989	2,090,309	22,607,629
---	--------	--------	--------	--------	--------	--------	--------	---------	-----------	------------

6.2.3 Table 21 demonstrates that in 2001, overall, households in North Yorkshire are, on average, less likely to be without a car than households anywhere else in the region and the country. But, this does not necessarily mean that every household in North Yorkshire has easy access to key services. This can be illustrated by analysing how the County's communities and citizens travel to work.

Table 22 below identifies that people from across the County travel to work in a variety of ways. The ways in which people travel to work tends to differ on a District by District basis. For example:

- More people in Selby than in any other District Authority area of the County use the car to travel to work. People in Scarborough are likely to use a car to travel to work. The percentage of people doing so is also higher than the region and the country on average.
- The percentage of people who have lifts to work in a car or van is highest in the Scarborough District Authority area and higher than the region and the country on average. It is lowest in Hambleton.
- 18% of people in Ryedale work from home. This is a higher rate than in any other District Authority area of the county and more than the regional and national average.
- In Craven, 3% of people travel to work by train. This is a higher rate than in any other District Authority area of the county; more than the region on average; and, 1% less than the country on average.
- The percentage of people using the bus, minibus or coach to travel to work is highest in Scarborough and lowest in the Hambleton and Ryedale District Authority areas of the County. At 5%, this amount of people is lower than the region and the country on average.
- Use of the bicycle to travel to work is, respectively, most popular in the Hambleton, Ryedale and Selby District Authority areas of the County where it is more popular than across the region and the country on average. By contrast, it is least popular in Craven.
- More people in Scarborough travel to work on foot than in any other District Authority area of the County, across the region, and the country on average. People in Selby are least likely to travel to work on foot.

Table 22. Modes of Travel to Work in North Yorkshire (2001)

	Hambleton	Harrogate	Ryedale	Selby	Richmondshire	Sacroborough	Craven	North Yorkshire	Yorkshire and The Humber	England
People who work mainly at or from home (%)	15	13	18	11	15	12	15	14	8	9
People aged 16-74 who usually travel to work by: Underground, Metro, Light Rail or Tram (%)	0	0	0	0	0	0	0	0	0	3
People aged 16-74 who usually travel to work by: Train (%)	1	2	1	2	1	1	3	1	1	4
People aged 16-74 who usually travel to work by: Bus, Mini Bus or Coach (%)	2	4	2	4	3	5	2	3	10	8
People aged 16-74 who usually travel to work by: Motorcycle, Scooter or Moped (%)	1	1	1	1	1	1	1	1	1	1
People aged 16-74 who usually travel to work by: Driving a Car or Van (%)	59	58	54	63	52	49	56	56	56	55
People aged 16-74 who usually travel to work by: Passenger in a Car or Van (%)	5	6	6	6	6	8	6	6	7	6
People aged 16-74 who travel to work by: Taxi or Minicab (%)	0	0	0	0	0	1	0	0	1	1
People aged 16-74 who usually travel to work by: Bicycle (%)	4	2	4	4	2	2	1	3	3	3
People aged 16-74 who usually travel to work by: On foot (%)	12	14	13	8	18	20	15	14	11	10
People aged 16-74 who usually travel to work by: Other (%)	1	1	1	0	2	1	1	1	0	0

7.0 HOUSING

7.1 Government has stated that, “everyone should have the opportunity to rent or buy a decent home at a price they can afford, in a place where they want to live and work”²⁷. The increasing cost of housing, to buy and rent, as well as its availability is however make this difficult for some more than others. Like any other rural area, the County has particular problems in relation to housing availability and affordability. Not unlike most areas, it also has particular challenges in terms of how decent the housing stock is. The remainder of this sub-section considers key statistics in relation to housing in and across North Yorkshire.

7.2 ACCESS TO HOUSING

7.2.1 Table 23. Average House Prices in North Yorkshire (2005)²⁸

	Hambleton	Harrogate	Ryedale	Selby	Scarborough	Richmondshire	Craven	North Yorkshire	Yorkshire and The Humber	England
Average House Price at Change of Ownership (£)	218,077	233,259	208,188	177,781	155,186	190,690	190,066	196,178	138,948	192,274

7.2.2 House prices across the County vary widely and are, on average, higher than average house prices across the region and the country as a whole. On average, at district level, there is a £78,073 difference between the most and least expensive housing in the County: housing is most expensive in Harrogate, and least expensive in Scarborough.

7.2.3 Table 24 below shows that the cost of renting housing also varies across the County. In 2005, the cost of rent paid to Registered Social Landlords (RSL) was highest in the Richmondshire District Authority area of the County and lowest in the Hambleton District Authority area of the County. Overall, across the County, the cost of RSL rent in the County was above the regional average and below the national average. Data for Local Authority housing rents are incomplete. But, considering that which is available, it appears that Local Authority housing

²⁷ SOURCE: <http://www.communities.gov.uk/housing/about/>

²⁸ SOURCE: ONS (2005).

rent is most costly in the Harrogate District (above the regional average and equal to the national average) Authority area and lowest, yet still higher than the regional average cost, in Selby.

Table 24. Average Costs of Housing Rent in North Yorkshire (2005)²⁹

	Hambleton	Harrogate	Ryedale	Selby	Scarborough	Richmondshire	Craven	North Yorkshire	Yorkshire and The Humber	England
Social Housing Rents, All Dwellings: RSL Net Rent (£) (March 2005)	54	61	60	57	57	65	55	59	51	61
Social Housing Rents, All Dwellings: LA Net Rent (£) (March 2005)	..	55	..	49	..	51	..	22	46	55

7.2.4 Table 25 illustrates the County's key housing supply and demand characteristics. In brief, this identifies that while the majority of housing is owner occupied or privately rented, there are some homeless households in the County; unfit dwellings; and, a limited supply of RSL and Local Authority owned housing. More specifically in this regard:

- Despite there being over 1,000 households (8% of all households in the County) classified as homeless in 2005, on average, in the same period, across the County, 3% of all houses were vacant.
- Harrogate had more homeless households (equal to almost 13% of all of the District's households) than any other District Authority area of the County in 2005. Craven had the least (equal to 4% of all of the District's households).
- The majority of vacant dwellings were, in 2005, in the Hambleton District Authority area and the smallest percentage of vacant dwellings were in Selby.
- Scarborough has the most (equal to 34% of all households in the County) individual households of all District Authority areas in the County. Craven has the least (equal to almost 6% of all households in the

²⁹ SOURCE: ONS (2005).

County).

- There was no Local Authority housing in the majority of District Authority areas in the County in 2005, but in Selby, 10% of all dwelling stock was Local Authority owned.
- RSL owned dwelling stock was available in all District Authority areas of the County in 2005. The majority of RSL dwelling stock was in Hambleton (equal to 12% of all housing stock in the District) and the minority was in Richmondshire (equal to 2% of all housing stock in the District).
- Owner occupied and privately rented dwelling stock made up the majority of housing stock in each District of the County. The highest proportion of owner occupied and privately rented to other housing stock was in Harrogate District Authority area. Across the County on average, there was an above regional and national average allocation of owner occupied/privately rented housing stock.
- Regarding the condition of the housing stock, in 2005, more dwellings were considered unfit than in any other District Authority area of the County, the region and the country on average.

Table 25. Housing Stock Supply and Demand³⁰

	Hambleton	Harrogate	Ryedale	Selby	Scarborough	Richmondshire	Craven	North Yorkshire	Yorkshire and The Humber	England
General Demand Indicators, Total Vacant Dwellings (%) (2005)	7	3	2	1	4	2	3	3	4	3
All Households on the LA Register (no. households) (2005/06)	1,162	2,497	1,029	1,788	4,382	1,380	739	12,977	247,499	1,634,301
Homelessness, Number of Households Accepted as Homeless, Total (no. households) (2004/05)	103	313	64	119	293	131	29	1,052	13,452	121,179

³⁰ SOURCE: ONS (2005).

LA Dwelling Stock (%) (April 2005)	0	6	0	10	0	8	0	3	12	10
RSL Dwelling Stock (%) (April 2005)	12	3	12	4	11	2	9	8	7	9
Other Public Sector Dwelling Stock (%) (April 2005)	3	1	0	0	0	7	0	2	0	0
Owner Occupied and Private Rented Dwelling Stock (%) (April 2005)	85	90	88	86	89	83	91	87	80	81
Total Unfit Dwellings (%) (April 2005)	2	4	6	4	5	3	3	4	5	4

8.0 CRIME

8.1 While crime has been falling in recent years, from 23,712 crimes in 2003/04 to 21,661 in 2005/06, violent crimes (using the total of woundings and common assault) rose from 4,547 to 6,107. While some of this increase was as a result of definitional changes, there has been an upward trend and reducing crime overall means tackling this issue. Table 26 below shows what crimes occurred and where in the County between 2003 and 2005/06.

Table 26. Crime Levels across North Yorkshire³¹

	Hambleton	Harrogate	Ryedale	Selby	Scarborough	Richmondshire	Craven	North Yorkshire	Yorkshire and The Humber	England
Violence Against the Person (no.) (2005/06)	846	1,766	417	1,339	2,032	603	675	7,678	112,060	992,094
Robbery (no.) (2005/06)	12	21	4	16	48	10	7	118	5,215	94,897
Burglary in a Dwelling (no.) (2005/06)	147	259	89	366	454	86	139	1,540	36,564	290,542
Theft of a Motor Vehicle (no.) (2005/06)	170	185	108	276	272	81	79	1,171	25,126	201,920
Theft from a Vehicle (no.)	332	569	208	427	677	124	170	2,507	55,857	476,704

³¹ SOURCE: Office for National Statistics

(2005/06)										
Road Accident Data, All Casualties (no. people) (2003)	134	166	122	97	112	72	94	797	3,593	32,296
Road Accident Data, All Car Occupants Killed or Seriously Injured (no. people) (2003)	84	93	64	49	51	37	45	423	1,607	14,631
Road Accident Data, All those using Two Wheeled Motor Vehicles Killed or Seriously Injured (no. people) (2003)	24	33	44	37	32	21	32	223	798	6,948
Road Accident Data, All Child Casualties (no. people) (2003)	6	14	6	8	11	3	4	52	445	3,476
Road Accident Data, All Elderly Casualties (no. people) (2003)	11	11	0	0	4	5	5	36	168	1,751

8.2 This Table shows that levels of crime vary across the County. Generally speaking, across the County, predominantly urban districts tend to experience higher levels of all crime and predominantly rural districts tend to experience higher levels of road accidents. More specifically, however:

- In 2005/06, there were more incidents of violence against the person in the predominantly urban District Authority areas of the County, namely in Scarborough, Harrogate and then Selby. The smallest number of such incidents was in Ryedale.
- There were more robberies in Scarborough District than in any other District of the County in 2005/06. At the same time, the smallest number of robberies in the County was in Ryedale.
- In 2005/06, the number of burglaries in a dwelling was highest in Scarborough District and lowest in Ryedale.
- In 2005/06, more motor vehicles were stolen from within the Selby District Authority area than any other District of the County. The lowest number of motor vehicle thefts at this time was in Craven.
- With regard to all road casualties, in 2003, there were more road casualties in total in Harrogate than in any other District Authority area of the County. The lowest number of total road casualties at this time was in the Richmondshire District Authority area.
- In 2003, there were more car occupants killed or seriously injured in Harrogate than in any other District Authority area of the County. The lowest number of car occupants killed or seriously injured at this time was in the Richmondshire District Authority area.
- The number of two wheel motor vehicle users that were killed or seriously injured in 2003 was highest in

- Ryedale District Authority area and lowest in Richmondshire District Authority area.
- The number of children who were road casualties in the County in 2003 was highest in Harrogate District Authority area and lowest in Richmondshire District Authority area.
- The number of elderly people who were road casualties in the County in 2003 was equally highest in the Hambleton and Harrogate District Authority areas and lowest in the Ryedale and Selby District Authority areas.

8.3 With regard to fires in particular, Table 27 below shows that, in 2005, the number of fires which were attended by the Fire Service in 2005 varies across the County. Overall, the Fire Service attended more incidents in Scarborough than in any other District of the County and attended the lowest number of incidents in the Craven District Authority area of the County. More specifically:

- There were more incidents of primary and secondary fires in the Scarborough District Authority area of the County than any other in 2005. Meanwhile, the smallest number of primary and secondary fires was in the Richmondshire District Authority area of the County.
- In 2005, the lowest number of special services used in the County was highest in Scarborough and lowest in the Craven District Authority area of the County.
- There was more fatal (fire related) casualties in the Ryedale District Authority area in 2005 than in any other District of the County and the smallest number of such incidents was, equally, in Craven, Richmondshire and Scarborough.
- There was more non-fatal (fire related) casualties in the Hambleton District Authority area in 2005 than in any other District of the County and the smallest number of such incidents was, equally, in Selby and Craven District Authority areas.

Table 27. Fires across North Yorkshire (2003)³²

	Hambleton	Harrogate	Ryedale	Selby	Scarborough	Richmondshire	Craven	North Yorkshire	Yorkshire and The Humber	England
Total Fire Service Incidents (no.)	1,062	1,845	606	930	1,827	549	528	7,347	93,444	830,238

Primary Fires (no.)	201	237	123	192	309	81	90	1,233	16,653	140,502
Secondary Fires (no.)	105	180	84	162	357	60	54	1,002	27,969	188,547
Special Services (no.)	279	390	150	195	357	174	135	1,680	11,271	147,522
Fatal Casualties (no.)	9	12	15	12	6	6	6	66	261	2,031
Non-Fatal Casualties (no.)	114	135	81	63	93	87	63	636	4,743	35,454

9.0 HEALTH AND INEQUALITIES

Table 28 provides insights into key health and inequality data for North Yorkshire. It shows that:

- 9.1
- In 2003, 8% of all births in Scarborough District were low birth weight live births. This is more than in any other District of the County; just below the regional average; and, above the national average. By contrast, the lowest percentage of low birth weights amongst all births in the County was experienced in Craven.
 - The infant mortality rate for the County is highest in the Richmondshire and lowest in the Hambleton District Authority areas. In Richmondshire, infant mortality is above the County average, but below the regional and national average.
 - Between 2003-05, life expectancy for males in the County was highest in the Harrogate and then Hambleton District Authority areas. The life expectancy for males in these Districts was above regional and national average. By contrast, across the County as a whole, life expectancy for females was lowest in the Scarborough District Authority area and lower than the regional and national average life expectancies for males.
 - Between 2003 – 05, life expectancy for females in the County was highest in the Hambleton and then Craven District Authority areas. The life expectancy for females in these Districts was above regional and national average. By contrast, across the County as a whole, life expectancy for females was lowest in the Scarborough District Authority area, which was above the regional and equal to the national average life expectancies for females.

Table 28. Key Health and Inequality Data for North Yorkshire

	Hambleton	Harrogate	Ryedale	Selby	Scarborough	Richmondshire	Craven	North Yorkshire	Yorkshire and the Humber	England
Low Birthweight Live Births (%) (2003)	5.3	5.0	5.3	5.8	8.0	5.5	4.7	5.7	8.3	7.7
Infant Mortality (per 1,000) (2003 - 05)	2.8	3.4	4.5	3.3	3.5	3.7	3.8	3.6	5.8	5.1
Life Expectancy at Birth: Males (years) (2003 - 05)	78.5	78.6	77.8	77.6	75.9	78.5	79.1	78.0	76.2	76.9
Life Expectancy at Birth: Females (years) (2003 - 05)	82.8	82.1	81.8	82.1	81.1	81.6	82.7	82.0	80.6	81.1

9.2 ALL AGE ALL CAUSE MORTALITY RATE (AAACMR)

This indicator is a mandatory LAA target to demonstrate health improvement and reduced inequalities. It gives the annual numbers of deaths per 100,000 population adjusted to take into account differing

Yorkshire has a healthy population with the majority of Districts within the County having an AAACMR significantly below the English average. In line with national figures there is a downward trend in the rate. However there are significant differences between the Districts with Scarborough and Selby having significantly higher rates than Craven. Reducing inequalities will mean decreasing the AAACMR in Selby and Scarborough at a higher rate than the downward trend in Craven.

9.3 SOCIO-ECONOMIC DEPRIVATION

There are relatively few pockets of severe deprivation in North Yorkshire, with less than 5% of the population living in neighbourhoods among the 20% most deprived in England. The proportion of children living in poverty is also well below the national average. Table 8 indicates the wards in the most disadvantaged quintile in North Yorkshire County. It is noteworthy that the national IMD scores at ward level ranged from 4.9 to 76.7. Whilst in this

context none of these wards are in the most disadvantaged quintile in England, these communities represent groups of people at the highest risk of poorer wellbeing in North Yorkshire.

9.4 TEENAGE PREGNANCY

The national trend in teenage pregnancies is downward but remains high in comparison with other northern European countries. Between 1998 and 2004 there has been a 11.1% decline in under 18 conception rates and 15.2% in under 16 conception rates. The highest rates can be found in Scarborough with the lowest rates in Ryedale. These are the lowest rates for 20 years. There is however still a lot of work to be done to maintain this decrease. The focus will need to both address areas with high rate and areas where the reduction has remained fairly static.

9.5 LIMITING LONG TERM ILLNESS

At the time of the 2001 Census 48% of the North Yorkshire population aged 65 years and over reported that they suffered from a limiting long term illness (LLTI). The prevalence of LLTI across the County is not evenly distributed, 29 of the 370 LSOAs in North Yorkshire wards had populations aged 65 years and over with 60% plus reporting that they had an LLTI .

9.6 Teenage Conceptions <18 Years in North Yorkshire County

Similar inequalities are found in the rate of emergency admissions to hospital in the population aged 80 years and over. The average admission rate in this population in North Yorkshire during 2003-2005 was 310/1,000 population; 21 of the 173 North Yorkshire County wards had populations with emergency admission rates of 400/1,000 or more in people aged 80 years plus.

10.0 CONCLUSIONS

10.1 INTRODUCTION

From the above statistical local evidence base for the North Yorkshire Sustainable Community Strategy; the feedback from workshop discussions at the NYSP Wider Partnership Conference; the North Yorkshire Local Area Agreement; the District Community Plans for the County; and, listening to partners it is clear that the following themes are crucial elements of sustainable communities in North Yorkshire. They are listed here alphabetically and in no particular order of importance

- Alcohol
- Economy and Enterprise
- Education
- Environment
- Health
- Migrant workers
- Older population
- Transport and Access to services

This conclusion summarises key evidence in relation to each theme taking into account differences between Districts of the County.

10.2

ALCOHOL

In North Yorkshire, total consumption of 8 or more units of alcohol for men / 6 or more units of alcohol for women on the heaviest drinking day in the previous seven days is above the national average and the County has a significantly higher rate of hospital in-patient stays related to alcohol misuse.

Linked to this across the County, between 2001 and 2003, more people in Scarborough District had alcohol related deaths than in any other District of the County. The rate of alcohol related deaths was also high (above the County average) in Harrogate and Selby Districts. Also, across the County, on average, more men than women had alcohol related deaths. But the rates of alcohol related deaths in men and women were highest in the County's mostly urban Districts.

10.3 ECONOMY AND ENTERPRISE

The state of the County's economy is mixed.

10.3.1 SIZE OF WORKING AGE POPULATION

The County's economy is reliant on a smaller working age population than elsewhere in the region and the country. For example, in 2006:

- Two (Selby and Richmondshire) of the seven Districts in the County had a total working age population which was equal to, or higher than, the regional and national levels of the same.
- Three (Harrogate, Selby and Richmondshire) of the seven Districts in the County had a total male working age population which was equal to, or higher than, the regional and national levels of the same.
- The total female working age population in the County was smaller than the regional and national average populations of the same and only two (Selby and Richmondshire) of the seven Districts had a total female working age population which was equal to, or higher than, the regional and national levels of the same.

10.3.2 RATES OF ECONOMIC (IN)ACTIVITY

There is not full economic activity across the total working age population in the County. But, rates of economic activity are generally above the regional and national average levels of the same. Most economically active people in the County are employees and there are more employees in the Harrogate District Authority area than in each of the other Districts of the County, the region and England on average. Self-employment levels for all economically active people across all Districts of the County are above regional and national average. Significantly, Craven District is home to 12% more self employed economically active people than England on average and 13% more than the region on average.

Rates of economic inactivity for all people in the County in 2006 were, meanwhile, highest (and, above the regional and national average) in the Selby and Scarborough Districts of the County and lowest in Craven and Richmondshire. For males specifically, the rate of economic inactivity is highest in Scarborough and for females it is highest in Selby.

10.3.3 FULL AND PART TIME WORKING

Across the County, overall, there are fewer full time (and, consequently, more part time) jobs than there are regionally or nationally on average. The situation does however vary at individual District level. For example, Ryedale has the largest proportion (72% full time, 28% part time) and Scarborough the smallest proportion (56% full time, 44% part time) of full time: part time jobs.

10.3.4 INDUSTRIAL SECTORS AND EMPLOYMENT OPPORTUNITIES

Employment opportunities in the County vary on a District by District basis.

For example, in 2006, employment across North Yorkshire as a whole was concentrated primarily around skilled trade (employing 15% of the County's total economically active population, equal to 1% more than the regional average for this occupation); and, management and senior official (employing 14% of the County's total economically active population, equal to 3% more than the regional average and 4% more than the national average for this occupation) occupations.

At individual District level however, the picture was mixed:

- In Hambleton, the majority of the economically active population was employed in either professional (15%), or elementary occupations (15%).
- In Harrogate, the vast majority of the economically active population was employed as managers and senior officials (23%).
- In Ryedale, the majority of the economically active population was employed as either process plant and machine operatives (16%), or in skilled trades' occupations (15%).
- In Selby, the majority of the economically active population was employed in either professional occupations (19%), or skilled trades' occupations (17%).
- In Scarborough, the majority of the economically active population was employed in elementary occupations (19%).
- In Richmondshire, the majority of the economically active population was employed in either associate

- professional or technical positions (19%), or in skilled trade occupations (18%).
- In Craven, the majority of the economically active population was employed as managers and senior officials (19%), in skilled trade occupations (17%), or in elementary occupations (15%).

Another way to consider these employment opportunity difference within the County is to consider where industrial sectors tend to dominate across the County. For example, in 2006:

- The majority (and, more than the regional and national average) of manufacturing jobs were in Selby and the minority were in Richmondshire.
- The majority (and, more than the regional and national average) of construction jobs were in Richmondshire and the minority were in Scarborough.
- The majority (and, more than the regional and national average) of all service jobs were in Harrogate and the minority were in Selby.
- The majority (and, more than the regional and national average) of distribution, hotel and restaurant jobs were in Scarborough and the minority were in Ryedale.
- The majority (and, more than the regional and national average) of transport and communication service jobs were in Ryedale and the minority were in Scarborough.
- The majority (and, more than the regional and national average) of finance, IT and other business service jobs are in Craven and the minority are in Scarborough.
- The majority (and, more than the regional and national average) of public administration, education and health service jobs were in Hambleton and the minority are in Ryedale.
- The majority (and, more than the regional and national average) of 'other' service jobs are in Richmondshire and the minority were in Selby.
- The majority (and, more than the regional and national average) of tourism related jobs were in Scarborough and the minority in Selby. There were also more tourism related jobs in each District of the County than there were regionally and nationally on average.

10.4.5 SALARIES

The gross weekly pay for all full time workers in the County is, on average, less than the regional and national

averages. Also, salaries in North Yorkshire vary in relation to location and gender.

For example, on a residence by residence basis, in 2006, the gross weekly pay for all people working full time ranged between £356 (Scarborough) and £476 (Harrogate). For male full time workers, it varied between £409 (Ryedale) and £513 (Richmondshire). For female full time workers, it varied between £292 (Scarborough) and £438 (Harrogate). The hourly pay for all people working full time ranged between £9 (Ryedale and Scarborough) and £12 per hour (Harrogate). For male full time workers, it varied between £10 (Scarborough) and £13 (Richmondshire). For female full time workers, it varied between £7 (Ryedale) and £11 (Harrogate).

10.4.6 BENEFIT CLAIMANTS

The percentage of the population which is claiming Job Seekers Allowance (JSA) varies according to age and location. For example, in 2007, more males in Scarborough claimed JSA than other males or females in other Districts of the County and across the region and England on average.

The length of time that individuals are claimants of JSA is, overall, relatively short. The percentage of people in North Yorkshire that claim JSA for up to 6 months is above regional and national averages; and, the percentage claiming JSA for over 6 and up to 12 months, as well as those claiming JSA for over 12 months, is lower than both the regional and national averages.

The situation in relation to Key Benefit Claimants also varies across the County. Scarborough District is home to the majority of all people claiming Key Benefits (namely: JSA; Incapacity Benefit; Lone Parents; Carers; income related benefits; disabled; and, bereaved) in the County. The proportion of people claiming any Key Benefits in Scarborough is either equal to or above the regional and national averages.

10.4.7 VAT (DE)REGISTRATION

VAT registrations and deregistrations are an effective and official guide to the pattern of business start-ups and closures. They are an indicator of the level of entrepreneurship and of the health of the business population³³.

Overall, there were fewer VAT registrations across the County than there were regionally or nationally in 2005. Within the County there was notable variation on a District by District basis. Harrogate and Selby Districts had above whole County average percentages of VAT registrations and Hambleton District had a below whole County average percentage of VAT registrations.

Also in 2005, across the County there was fewer VAT deregistrations than there was regionally or nationally, with some variation between individual Districts. For example:

- Selby and Scarborough Districts had above County average percentages of VAT deregistrations.
- Hambleton; Ryedale; Richmondshire; and, Craven Districts had below County average percentages of VAT deregistrations.
- Harrogate District experienced the same percentage VAT deregistrations as the County on average.

Finally in this regard, the overall number of VAT registered business in the County also varied substantially on a District by District basis in 2005. For example:

- Harrogate, then Hambleton and then Scarborough were home to almost 60% of all VAT registered businesses in the County.
- The predominantly rural Districts of the County (using the DEFRA 'Rurality Definition' these are: Richmondshire, Ryedale and Craven) are together home for only 32% of all VAT registered businesses in the County.

10.5 EDUCATION

10.5.1 While the County on average enjoys high levels of educational attainment, this varies in relation to the level of education and also location (on a District by District basis) across the County.

10.5.2 KEY STAGE 2

In 2006, at Key Stage 2 for example:

- The percentage of pupils achieving level 4 or above in English was highest in the Harrogate and Craven District Authority areas of the County and lowest in the Scarborough District Authority area. Overall,

educational achievement in this regard is either equal to or above the regional and national average in five (Hambleton, Harrogate, Ryedale, Selby and Craven) Districts of the County.

- The percentage of pupils achieving level 4 or above in Maths was highest in the Craven District Authority area of the County and equally lowest in the Scarborough and Richmondshire District Authority areas. Overall, educational achievement in this regard is above the regional and national average in five (Hambleton, Harrogate, Ryedale, Selby and Craven) Districts of the County.

10.5.3 KEY STAGE 3

Also in 2006, at Key Stage 3:

- The percentage of pupils achieving level 5 or above in English was highest in the Craven District Authority area of the County and lowest in the Scarborough District Authority area. Overall, educational achievement in this regard is above the regional and national average in six (Hambleton, Harrogate, Richmondshire, Ryedale, Selby and Craven) Districts in the County.
- The percentage of pupils achieving level 5 or above in Maths was highest in the Craven District Authority area of the County and lowest in the Scarborough District Authority area. Overall, educational attainment in this regard was above the regional and national average in six (Hambleton, Harrogate, Richmondshire, Ryedale, Selby and Craven) Districts in the County.

In summary, it appears that, on average, pupils in Craven District tend to perform well in Maths and English at Key Stages 2 and 3 and pupils in the Scarborough and Richmondshire Districts tend to perform less well at this level.

10.5.4 GCSE

At GCSE level, the picture in relation to educational attainment across the County is also mixed. For example:

- In 2006, the percentage of pupils achieving 5+ GCSEs / equivalent qualifications at grades A* - G was highest in the Harrogate District Authority area of the County and equally lowest in the Scarborough and Richmondshire District Authority areas. Overall, educational attainment in this regard in the County is above the regional and national average in all Districts.

- In 2006, the percentage of pupils achieving 5+ GCSEs / equivalent qualifications at grades A* - C was highest in the Hambleton District Authority area of the County and lowest in the Scarborough District Authority area. Overall, educational attainment in this regard in the County, is either equal to or above the regional and national average in all Districts.

Thus, on average, GCSE pupils in the Harrogate and Hambleton Districts thus appear to perform better than pupils in Scarborough and Richmondshire Districts.

10.5.5 GCE/VCE A LEVEL

Educational attainment at GCE/VCE A Level is also varied across the County. For example:

- In 2004/05, Harrogate District was home to more 16 – 18 year old GCE/VCE A Level students (29% of the entire County's population of such people) than any other District of the County and Ryedale District was home to the lowest number (7% of the entire County's population) of such students.
- Also in 2004/05, Hambleton District was home to the highest percentage of 16 – 18 year old students achieving 2 or more passes at GCE/VCE A Level in the County and Scarborough District was home to the lowest percentage of such students.
- Craven District was home to the highest percentage of 16 – 18 year old students achieving 3 or more passes at GCE/VCE A Level in the County and Scarborough and Selby District Authority areas were home to the equally lowest percentage of such students in 2004/05.

At GCE/VCE A Level, it therefore appears that, on average, pupils in Harrogate, Hambleton and Craven Districts of the County perform better than pupils in the Ryedale, Scarborough and Selby Districts.

10.5.6 HIGHER EDUCATION

At the Higher Education level, in 2006, the differences across the County's educational attainment landscape remain noticeable. Harrogate District was home to the vast majority of the County's full and part time Higher Education students aged 18 – 20. Craven and Ryedale Districts were home to the smallest numbers of the County's full and part time Higher Education students aged 18 – 20.

10.6 ENVIRONMENT

10.6.1 The County's predominantly rural environment is probably one of its most renowned and best loved features.

Generally speaking, 80% of the County's population is resident in a rural area. They live in sparsely populated, dispersed communities across a large number of smaller settlements. Notably, over 40% of the County's population lives in settlements of fewer than 3,000 people. Currently, the Districts of Richmondshire, Ryedale and Craven are, respectively, the most sparsely populated of all Districts in the County.

The remaining 20% of the County's population lives in predominantly urban areas of the County and in particular, in the towns of Harrogate and Scarborough.

10.6.2 Rurality can also bring with it disadvantages associated in particular with accessing services and employment opportunities. This is considered below in relation to 'Transport'.

10.6.3 Data about the environment, climate change, air and river quality is not available at District or County levels. The lowest spatial level that Government records it at is regional level. Meaningful local conclusions cannot therefore be drawn about how the environment impacts the sustainability of the County's communities.

10.7 HEALTH

10.7.1 Key health indicators are as follows:

- Low birth weight live births
- Infant mortality rate (per 1,000 infants)
- Life expectancy for males and for females

10.7.2 LOW BIRTH WEIGHT LIVE WEIGHTS

Across the County, in 2003, the rate of low birth weight live births varied on a District by District basis with

Scarborough experiencing 8% of all low birth weight live births. This was more than in any other District of the County; just below the regional average; and, above the national average. By contrast, the lowest percentage of low birth weights amongst all births in the County was experienced in Craven.

10.7.2 INFANT MORTALITY RATE

The infant mortality rate for the County also varied on a District by District basis in 2003. Richmondshire had the highest Infant Mortality Rate (but, below the regional and national average) and Hambleton the lowest.

10.7.3 LIFE EXPECTANCY

Between 2003-05 life expectancy for males and females varied across the County.

- During this period, male life expectancy was highest in Harrogate District (which was above regional and national average) and lowest in Scarborough District (which was below regional and national average).
- Also during this period, life expectancy for females in the County was highest in the Hambleton District (and above regional and national average) and, as per male life expectancy, lowest in Scarborough District (but, above the regional average and equal to the national average in this regard)

10.8 MIGRANT WORKERS

10.8.1 The size of the 'Eastern European Migrant' population in the County is not known. At the time of writing the Strategy, such intelligence was unavailable. Anecdotal however, it is known that in North Yorkshire, there are many migrants from Eastern Europe who are:

- Of working age
- Without children
- Contributors to the economy rather than service users
- Working predominantly in the catering and agriculture sectors

More intelligence is required to understand how the public, private and voluntary sectors can best support and meet the needs of this Sub-Group of the County's population.

10.9 OLDER POPULATION

- 10.9.1 In 2006, the largest sized age group in the County was aged 40 – 44 with most people in this age group living in the Harrogate, Scarborough or Hambleton Districts of the County. Also in 2006, people aged over 50 made up approximately 39% of the entire County's population.
- 10.9.2 By 2020, the dominant age group in the County is expected to be aged over 65 years. The increase in the size of the population aged 65 years and over is expected to vary between Districts. There will be a 36% increase in the Scarborough District and an almost 50% increase in Selby District.
- 10.9.3 Such increases in the number of older people living in North Yorkshire will create substantial additional pressures on social and health care services across the County.

10.10 TRANSPORT AND ACCESSIBILITY

10.10.1 TRANSPORT INFRASTRUCTURE AND SERVICES

North Yorkshire is generally well served by transport links, including:

- the A1, providing an important north-south route through the County
- the A168/A19 linking the A1 to Teesside
- the A64 linking Leeds and the A1 to the east coast of Scarborough
- the A66 Trans Pennine route
- the A629/A65 linking West Yorkshire to Cumbria and a short section of the M62 in the south of the County

Public transport is also provided in the County. For example:

- Annually, approximately 17.6 million km of commercial and 4.4 million km of contracted bus services use the highways network in the County.
- There are nine main bus stations and over 5,000 bus stops in the County.
- There are 46 railway stations and 418km of rail routes serving the County.

10.10.2 ACCESSIBILITY

At individual settlement level, many people struggle to access a wide range of services and most settlements do not have a sufficiently large catchment population to support a wide range of services. This has led to Countywide increased demand for, and use of, private cars / other motor vehicle. For example, in 2001:

- The percentage of households without a car or van in each District of the County was below the regional and national average.
- Harrogate District had a higher number of households with one, two, three or four cars or vans than any other District of the County.
- Hambleton District had the highest percentage of households with two or three more vans of all Districts in the County and the County, the region and the country on average.

Evidence about how people travel to work indicates however that, in comparison with the country on average, more people across the County work at home; travel to work by car; or, walk to work. It also shows that, in comparison with the country on average, fewer people across the County travel to work by train; by bus; or, by taxi.