

co₂sense yorkshire

carbon sense 2 commercial sense

Stewart Bunney
Partner Account Manager

Who are we?

- Wholly owned subsidiary of Yorkshire Forward
- Four key programmes of activity:
 - Resource Efficiency Yorkshire
 - Future Energy Yorkshire
 - Carbon Action Yorkshire
 - Carbon Capture & Storage

co₂sense yorkshire

carbon sense 2 commercial sense



Resource Efficiency
Yorkshire

- Regional Resource Efficiency Partnership
- Resource Efficiency Business Support
- Policy, Research and Evaluation
- Support to regions Resource Efficiency Business Sector

CarbonAction
Yorkshire
low carbon leadership

A part of **co₂sense yorkshire**[™]

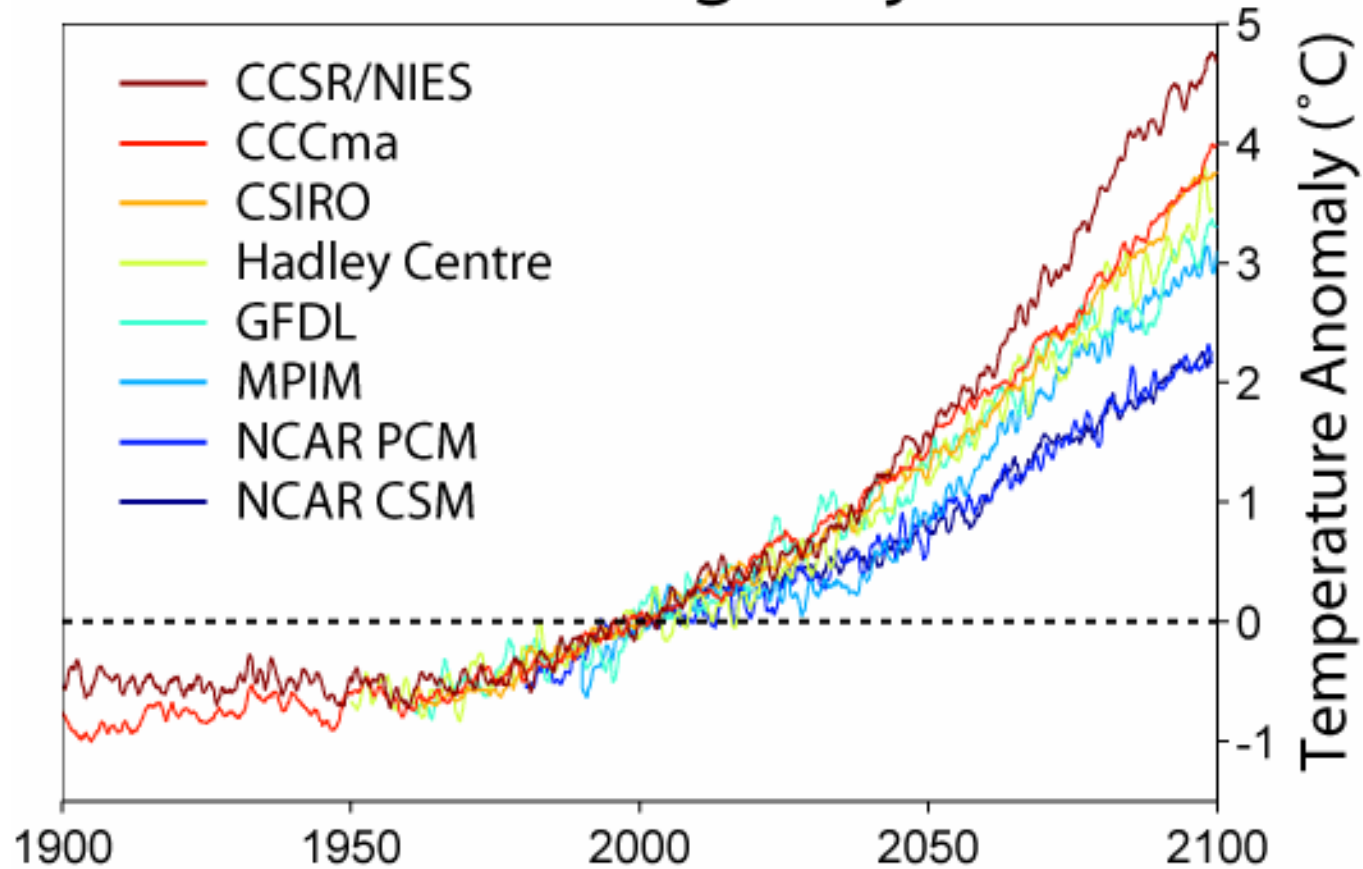
- Engaging the regions strategically important organisations
- Putting carbon reductions on the corporate agenda
- Ensuring the regions largest organisations are in a position to realise the emerging opportunities



Future Energy
Yorkshire

- Increasing the renewable energy generating capacity within the region – heat & power
- Wood fuel infrastructure development across the supply chain

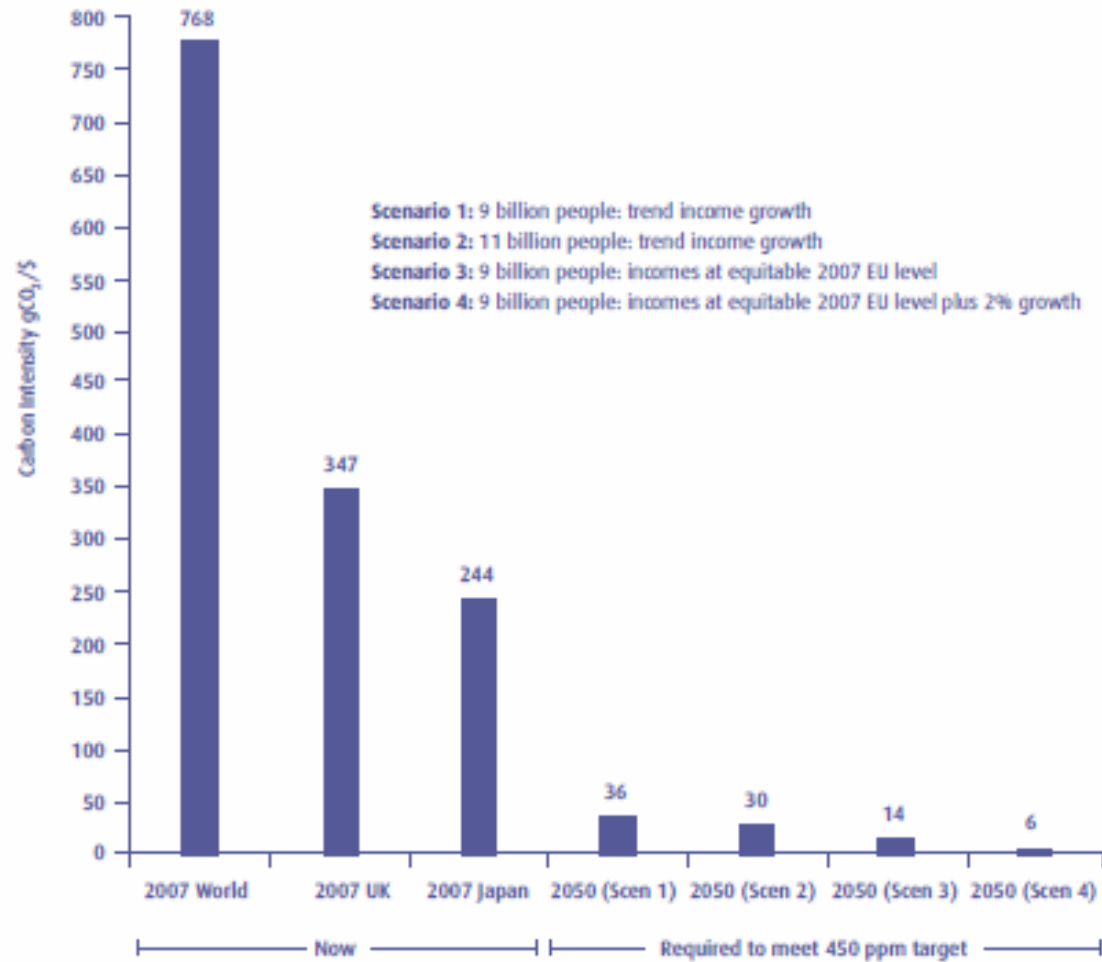
Global Warming Projections



co₂sense yorkshire

carbon sense 2 commercial sense

Figure 17 Carbon Intensities Now and Required to Meet 450 ppm Target²⁵



What does this mean?

- Mitigation and Adaptation is needed
- There are both **Risks** and **Opportunities**
- Clear impacts on North Yorkshire communities
- Clear impacts on service delivery
- Solutions will come from cross sector collaboration and partnerships – there are no silver bullets

Discussion:

- What impact is climate change going to have on North Yorkshire communities and service delivery?
- What are the opportunities that will arise from meeting the challenge of climate change?
- What mitigation and adaptation work is underway, and how can this be developed through the NYSP?

Contacts

Resource Efficiency Yorkshire

www.recyclingaction-yorkshire.org.uk

0113 237 8419

Carbon Action Yorkshire

www.carbonaction-yorkshire.org.uk

0113 261 5151

Future Energy Yorkshire

www.fey.org.uk

0113 237 8436